

Quality Horse Barns



Custom Built

- Garages
- Run-In Barns
- Storage Barns
- Modular Barns
- Chicken Coops
- Shed-Row Horse Barns

Sealed engineered drawings available in all states

White Pine Run-In Sheds



10'x18' with Keystone gold stain



10'x12'



10'x16' Painted red T1-11 siding
with tan trim



10'x20' Optional stall



10'x16' Painted red with black trim



12'x30'



12'x24' Painted tan T1-11 siding

White Pine Shed Row Barns



12'x32' Painted clay with red trim



10'x24' Painted clay with tan trim



10'x30'



12'x24' Clay T1-11 siding with white trim



10'x36' Optional 4' overhang
with Keystone gold stain

Metal Buildings



10'x24'
with red metal siding and
insulated white metal roof



10'x24'
with red metal siding, insulated white metal roof, and
optional metal Dutch doors



10'x24'
With 2 tone metal siding and insulat-
ed green metal roof

Lean-To Buildings



Pictured without lean-to



10'x32' - with optional metal roof



10'x24' - Run-in-shed with optional hinged 8' overhang and drop vent



12'x32'

Step 3

Horse barn with optional 8' hinged overhang, red paint with tan trim, window in service door, cupola with weather vane and gable vent



Step 2

Shown with optional hinged lean-to

Step 1

White Pine Modular Barns



36'x36' Lancaster Barn
painted red, high center aisle with vents,
no loft, Dutch doors with windows, cupola
with weather vane



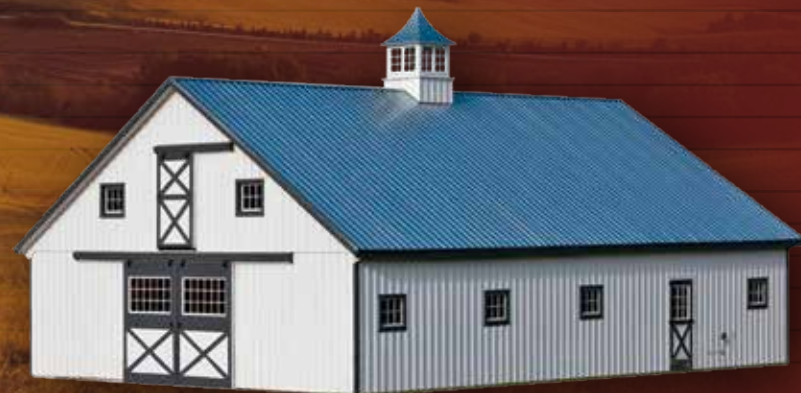
36'x36' Monitor with optional red
metal roof, windows in doors, Dutch
doors, double hung windows, natural
stain and cupola with weather vane.



30'x36' Kennebec Barn with loft,
6 pitch roof, cupola with weather vane
windows in center aisle doors, painted
clay with tan trim, gutters and downspouts



36'x24' Trail Side Barn with four pitch roof, optional
tan paint, blue trim, double hung windows,
and Dutch door with windows



36'x50' High Country Barn with eight pitch A-frame and
hayloft. Optional black metal roof, windows in sliding doors,
service door, cupola with window, white paint and black trim

White Pine Storage Sheds



10'x16' Hudson style with cedar stain



10'x14' New England Style
Keystone Gold Stain



6'x8' Cape



12'x20' Cape style with optional
transom windows. Painted clay with blue trim



10'x14' Manor Style painted red with black trim



10'x12' Cottage



10'x30' Manor style with gable vent
optional service door with window and two extra
windows

Wood Sheds



6'x8' Shown with cedar stain



6'x12' Shown with natural stain
and green metal roof



4'x8' Shown with clay paint and tan trim

Chicken Coops



4'x6' chicken coop
with roll-away egg box



6'x8' with green metal roof

Garages



12'x24' Elite style with optional homestead garage door
painted tan with brown trim



24'x24' prefab with trusses
8'x8' garage doors



24'x24' with cedar stain



24'x24' with loft and optional homestead garage doors
painted clay with tan trim, 8 pitch roof, 30"x40" windows, loft door
with transom window, LP-cedar impression painted red

Hinged Roof Buildings



12'x16' White River Shed with 12 pitch hinged roof, clay paint and tan trim



12'x24' White River Garage with 12 pitch roof, tan paint and green trim



Step 1

Step 2

Step 3



Step 4

20'x24' two story double wide garage with 8 pitch roof, and shown with optional homestead doors and tan paint with red trim

Options



Vapor proof lights
with die cast guard



Glue LAM LVL header
for increased snow loads
and hurricane regions



Grill with hay rack
and feed hole



Gable vent



Brackets for hurricane regions



Chew guard



Drop vents



Double saddle and/or
harness cabinet with shelf
size 51 1/2" x 72"H x 32"D



3 compartment feed chest
size 50 1/2"w x 34"H x 17 1/2"D



2 compartment feed chest
size 34"w x 34"H x 17 1/2"D



Cupola
available with
weather vane

Consecutive wall
cabinets for custom sizes



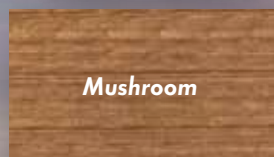
Double door wall cabinet
size 39"w x 36"H x 14 1/4"D



Single door wall cabinet
size 27"w x 36"H x 14 1/4"D

Color Swatches

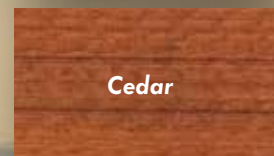
STAIN COLORS



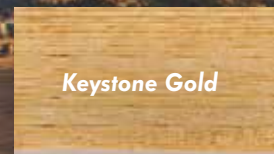
Mushroom



Natural

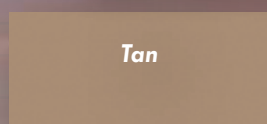


Cedar

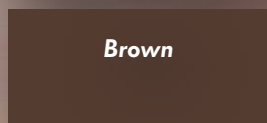


Keystone Gold

METAL ROOF & SIDING COLORS



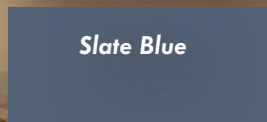
Tan



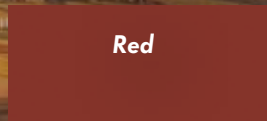
Brown



Beige



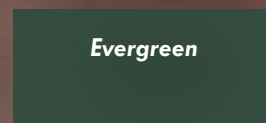
Slate Blue



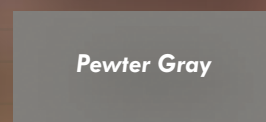
Red



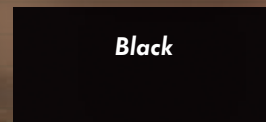
Charcoal



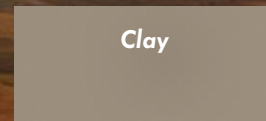
Evergreen



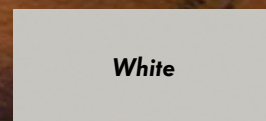
Pewter Gray



Black



Clay



White

PAINT COLORS



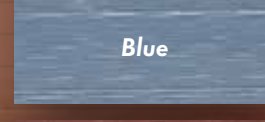
White



Clay



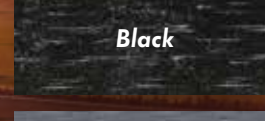
Tan



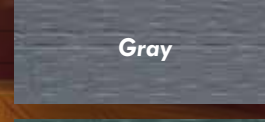
Blue



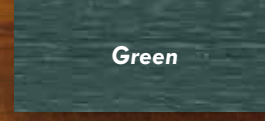
Red



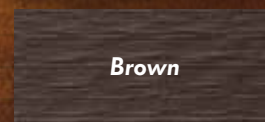
Black



Gray



Green



Brown

SHINGLE COLORS



Williamsburg Slate



Weathered Wood



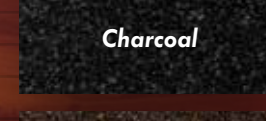
Shakewood



Pewter Gray



Fox Hollow Gray



Charcoal



Barkwood



Hunter Green



Hickory

Colors May Vary