



HOMES



HOMES



2880 State Route 45
Salem, OH 44460

330-332-9940

sales@salemstructures.com

www.salemstructures.com



Buckhorn Builders is a Certified Modular Home Builder



*Distinctive
Modular Homes
of the
Highest Quality*



www.salemstructures.com





Building Homes to Suit Your Life

Think about life. Think about the things that will be remembered long after the final bell in life goes off. Is it family? Is it relationships? Is it love?

At Buckhorn Builders, we bring it all together.

Started in a small town 5 miles south of Millersburg, Ohio, Buckhorn Builders has come a long way since our inception. Starting out as a side project, the first log cabin Paul Troyer (founder) built was a 10'x10' solid log dwelling. After a weekend at a local trade show the business was underway! From solid log cabins, to pole barns, to remodel construction work, every effort was directed towards the high quality customer relationships that we strive for to this day.

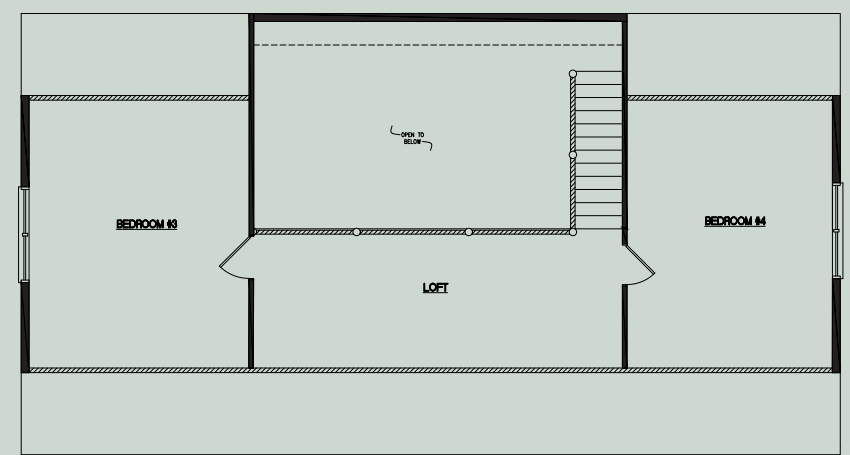
By 2016, all projects at Buckhorn Builders had evolved into modular log cabins. With a new manufacturing facility at the onset of 2017, Buckhorn Builders had become a premier modular home builder in Ohio. Since 2017, we have built modular homes in Ohio, West Virginia, Pennsylvania, and Tennessee!

As we continue to strive for top quality, whether it be finishing kitchen cabinets, framing exterior walls, or rough wiring your new home, Buckhorn Builders is always searching for that place your descendants will call "Home".

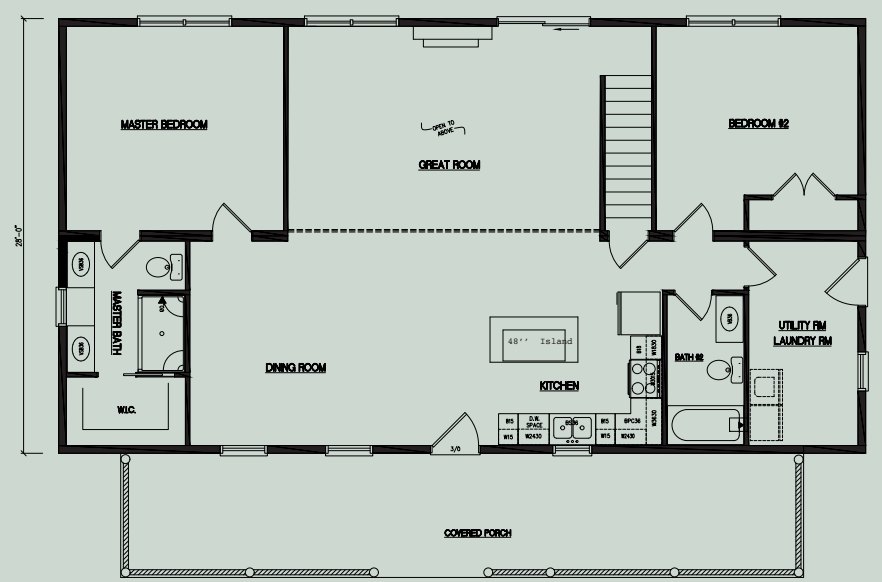




28' x 52' Loft Plan
704 Square Foot

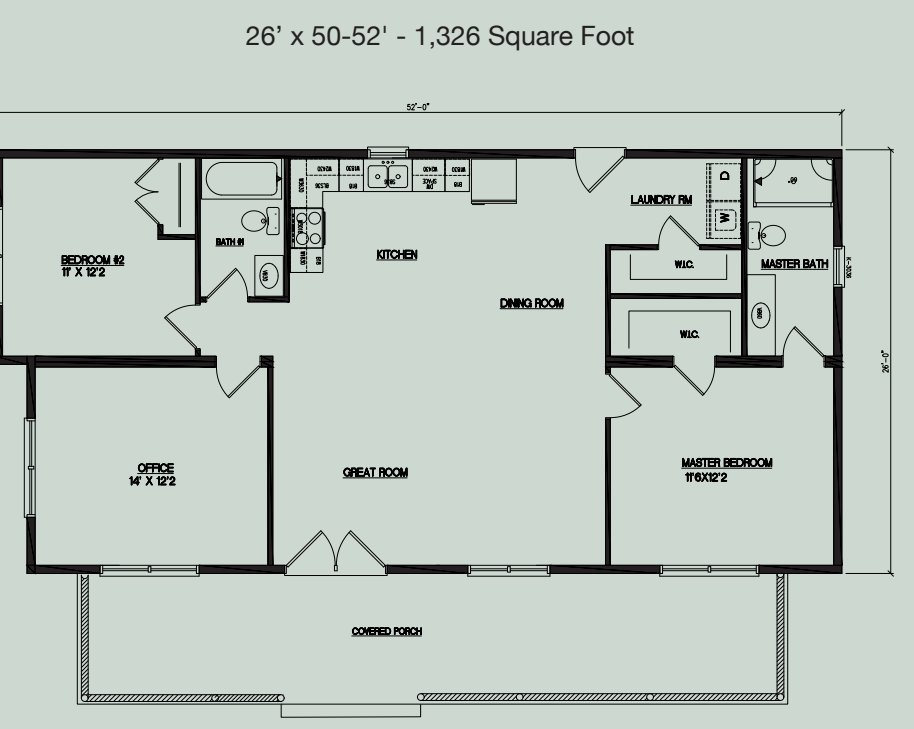
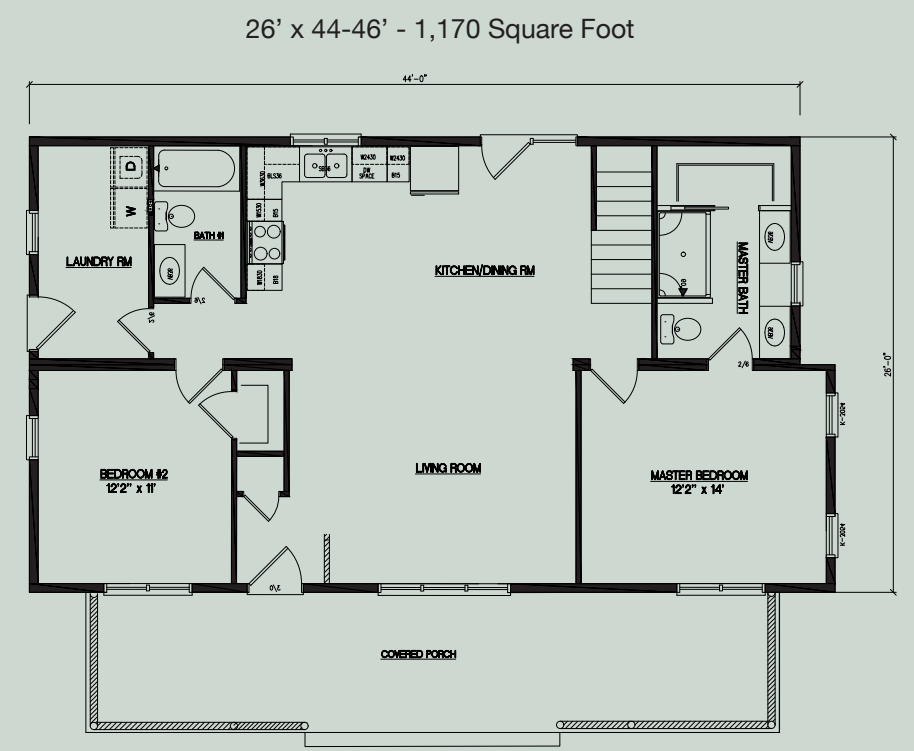


28' x 52' - 1456 Square Foot



The **Timberline home** is the Taj Mahal of log homes! Sit back and relax into your easy chair after a long day of work, knowing that you own a top of the line log home! Unlike the Valley View and Sunset Ridge homes, the Timberline has a stairway leading to a second story, large enough to accommodate 2 bedrooms and a roomy loft area. The bird's eye view of the great room from the 20' vaulted, interior ceiling will make the Timberline a home the neighbors will envy! The standard option of a shed or a gable roof porch makes this home a sanctuary to create memories that last a lifetime! A broad selection of floor plans that will accommodate up to four bedrooms, two bathrooms, the laundry room, and the spacious, open concept kitchen and living room! Dream away, and we will make the Timberline yours forever!



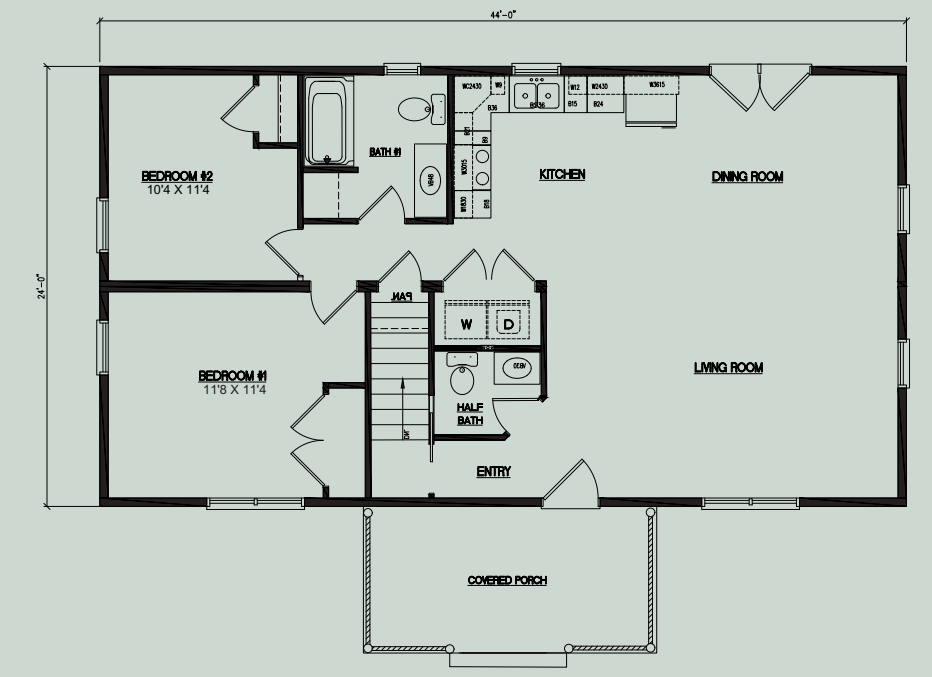


The **Sunset Ridge Home** is a deluxe, ranch style home featuring up to three bedrooms, two bathrooms, and an open concept living room/ kitchen. Take a walk inside and you will discover the gently sloping, pine interior ceiling. A perfect fit for your lifestyle. The exquisitely designed master bath, the second bedroom, the laundry room, and the large kitchen, will have you immediately longing for your new home! Add an island, a granite countertop, white wash the master bath, and stain the interior walls. Shift the floor plan to suit your specific needs, and before you know it your Sunset Ridge will be "talk of the town". The log railing on the timber framed gable porch, will pair perfectly with the option of a vinyl composite decking material! Open the door leading to the basement stairs, and you will ask yourself, why not?

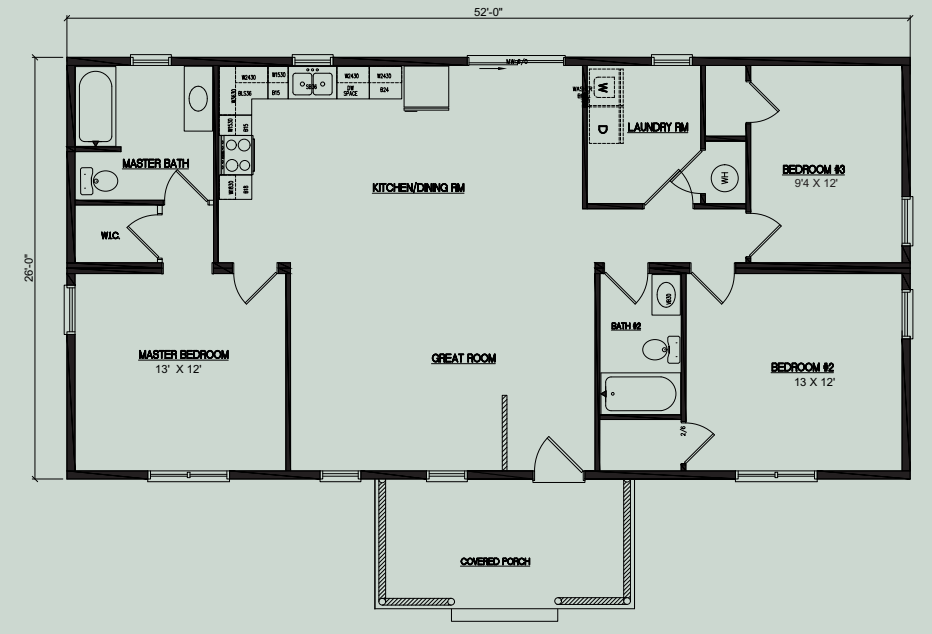




24' x 44' - 1056 Square Foot



26' x 52' - 1352 Square Foot

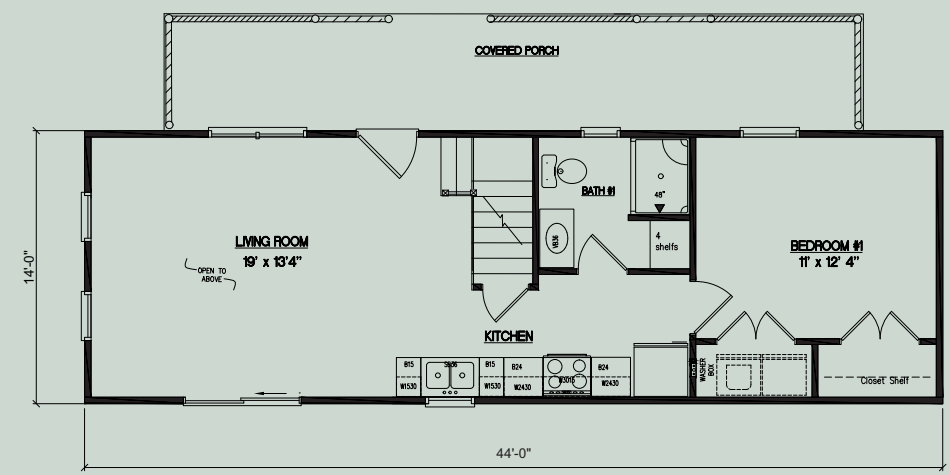


The Valley View Home is perfect for the “downsizers” of the World. The people looking to remove their clutter, have a smaller lawn, and settle down on the front porch, overlooking the days’ hard work. The ranch style build of the Valley View will appeal to virtually any suburban neighborhood, or the back parcel of grandpa’s farm! With its pitched interior and pine ceiling, the Valley View will be your best choice in many years! The open concept kitchen and living room will have you saying “yes” right away! The timber framed, gable front porch along with the quality crafted wood exterior makes the Valley View your home of the ages!

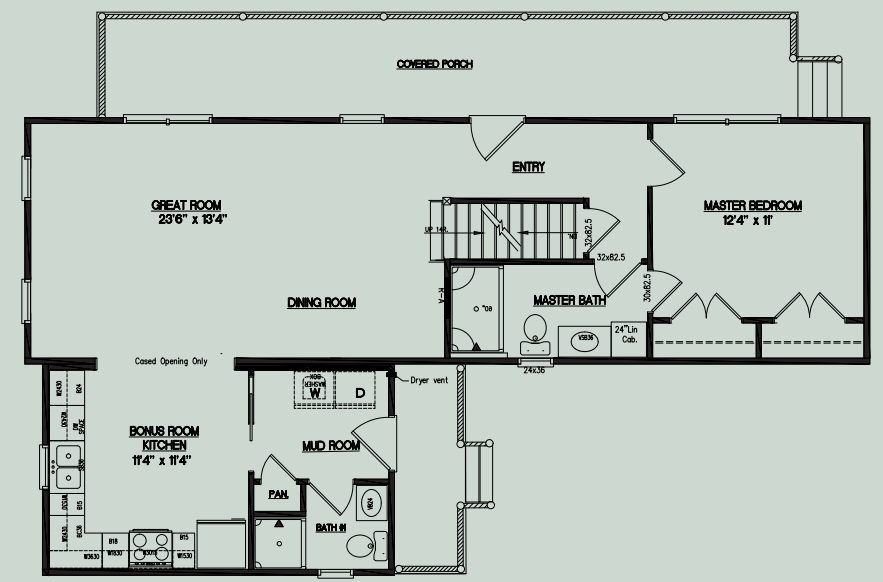




14' x 44' - 616 Square Foot - Loft 336 Square Foot



14' x 48' w 12' x 20' Addition - 912 Square Foot - Loft 336 Square Foot



This home is for the **Pioneer** in all of us! The name "Pioneer" speaks for itself! The flamboyant looks of the Pioneer Home resembles many of our forefather's homes of the 18th and 19th centuries. With its 10-12 pitch, cathedral, interior ceiling, and exposed rafters, the Pioneer will become your family heirloom! The loft, extending the entire width of the house and half the length, will have you scheduling neighborhood cookouts! The bonus room, featuring the second bathroom, the second bedroom, and a laundry area will accommodate for an extra family on a weekend campout, or the ample space needed for a permanent residence! The Pioneer's versatility, fitting into grandpas back forty or the local suburban neighborhood will make this house your new "Home".





Custom Designed and Built to Suit Your Specific Needs

The name "Custom" has a special ring to it, doesn't it? Buckhorn Builders has builds a number of custom homes every year. A name hasn't been given to these specially built homes because they encompass a small part of all the other homes we build! Present your ideas and we will customize your specific needs and wants for your custom modular home.





QUALITY CONSTRUCTION

Looks Like a Cabin, Functions Like a Home

sales@salemstructures.com

salemstructures.com



Built in the heart of the World's largest Amish Community, our team at Buckhorn Builders is always looking to preserve the rich heritage of our community, along with serving our customers with supreme quality and support! With the vast majority of our building materials being supplied from the finest contractors and suppliers in Holmes County, you can be assured a home that will outlast the neighborhood! With the standard being; 2x6 walls, 2x10 floor joists, handcrafted kitchen cabinets/trim, and in-house installed plumbing/electric, you will quickly see the Buckhorn advantage! On top of quality supplies, your home is built at a climate controlled facility where the elements will never get a chance to hinder your home during the building process.

