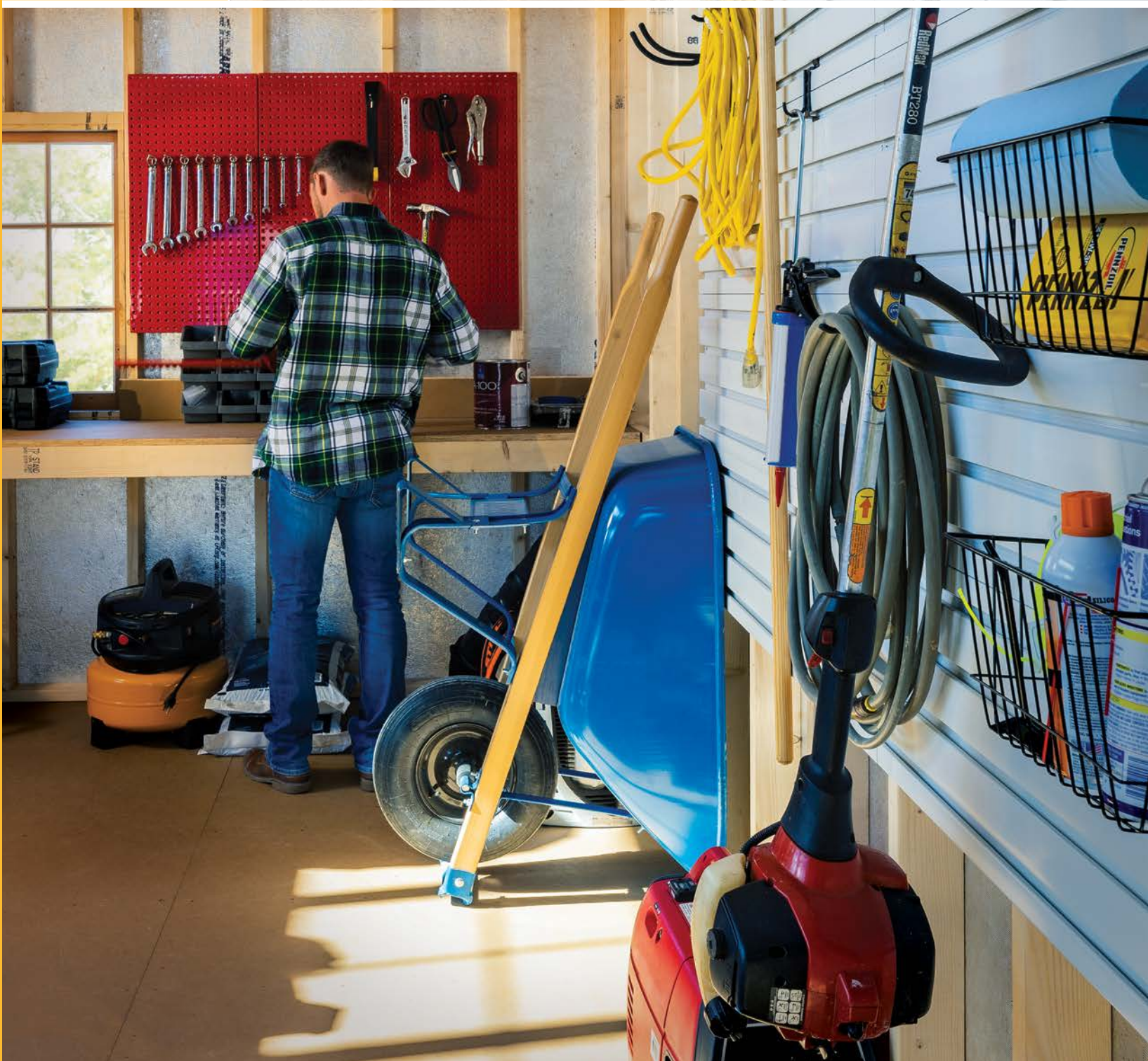


BUILD INSTALL INSPIRE

SHEDS BY JDM STRUCTURES

2023

STORAGE SOLUTIONS ■ HOBBIES & LIFESTYLE ■ SHED LIVING ■ FARM LIFE





**SOMERSET-INSPIRED
GARAGE**
16'x32'

Special touches: SmartSide in Charcoal Gray with Soft White trim, Black shingles, 8' walls, 12/12 roof pitch, 9'x7' garage door, solid-panel fiberglass door, concrete floor by customer, custom windows and custom full-width pent roof.

BUILD INSPIRE INSTALL

OUR PURPOSE *is to reflect the Hand of God in the quality and integrity of our work, to be His steward in our use of the Earth's resources, and to witness for Him in the fairness, honesty and humility of our daily interactions with others.*

OUR VISION *is to use new, efficient, green building methods and materials to provide well-designed, well-constructed accessory buildings, homes and commercial buildings that solve problems for people and improve their living conditions.*

OUR MISSION *is to treat everyone with respect, never bragging or exaggerating, helping buyers make the best choice for their family or business, being fair and honest in every transaction, delivering on time, and exceeding expectations whenever possible.*

OUR PLEDGE TO YOU

You will never be treated unfairly or unkindly here.

Oh, to Have an Office Shed

34





BUILD + INSTALL + INSPIRE

contents

6 Backyard Curated

Start here with some of our most popular choices.

8 Storage Solutions

Take control of your life with a dedication to organization.

22 Hobbies + Lifestyle

Build a shed specifically for your interests.

40 Shed Living

Vacation getaway, tiny home or starter home—you'll see how people outfit their shed homes.

50 Garages

A new garage can improve your life in so many ways.

56 Farm Life

Whether you are housing horses or taking gardening to the next level, these will inspire your next building.

62 KidzSpace

Can you imagine anything better for the little ones in your life?

66 7 Smart Reasons to Buy Here

It is easy to see the difference from one shed to another. This reference guide will help you make a decision.

67 Complete Buyer's Guide

WHEN IT COMES TO BOTH FORM AND FUNCTION, THESE SHEDS ARE SOME OF THE MOST POPULAR AMONG OUR CUSTOMERS. COLORS, SIZES, STYLES, SPECIAL TOUCHES—IF YOU ARE NOT SURE WHERE TO START, BEGIN HERE.

NOTICE HOW THE GREENERY AROUND THIS SKYLINE POPS AGAINST THE DARK TONES OF THE SHED. THIS PAIR SETS THE SCENE.



SKYLINE
8'x12'

Special touches: SmartSide in Chestnut, Black shingles, 66" double Cottage Stall doors in Black Fox, 24"x36" aluminum window with brown grills. Inside: three 16" shelves.

THE CURATED

THIS IS A SHED THAT HOLDS ITS OWN. THE CONTRASTING COLORS AND ADDITION OF SHUTTERS, FLOWER BOXES AND WEATHERVANE MAKES THIS A CENTERPIECE WHEREVER IT IS.



HARTFORD
12'x20'

Special touches: 7/12 roof pitch, SmartSide in Charcoal Gray with Soft White trim, Medium Gray shingles, Cottage Stall doors, 30"x36" aluminum windows, Z-style shutters, wood vent, flower boxes, and a large cupola with a Sailboat weathervane.



ONTARIO
16'x28'

Special touches: SmartSide siding and trim in Butternut, Brown shingles, copper pent roof, brown garage door, large wood vents and a large coppertop cupola with copper finial. Not shown: Crossbuck door, 8' loft.

WHEN YOU WANT TO MAKE A STATEMENT, THE COMBINATION OF COPPER ON THE CUPOLA AND PENT ROOF WITH BUTTERNUT SIDING IS A GREAT CHOICE.

COLLECTION



MYSTIC
10'x10'

Special touches: SmartSide in Barn Red with Soft White trim and doors, Weathered Wood shingles, Craftsman Crossbuck doors and a wood vent.

NOTHING BEATS A CLASSIC. IF TRADITION IS IMPORTANT TO YOU, BRING ALIVE THE FARMING STANDARD WITH BARN RED PAINT.

STORAGE SOLUTIONS

SOLVE ALL YOUR NEEDS WITHIN FOUR WALLS

It could hold your lawn equipment, the hobby you've wanted a space for, or the yard games your family plays for years on end. Curate your new space to store the lifestyle you desire. What you envisioned for this backyard addition is completely customizable. De-clutter all your home collections and make your dreams a reality.



NEWPORT
12'x20'

Special touches: 8/12 roof pitch, SmartLap in Driftwood with Devon Cream trim, Barn Red accents and Weathered Wood shingles. Cottage and Craftsman Crossbuck doors, 24"x36" aluminum windows, arched timber braces, flower boxes, copper standing seam pent roof, Z-style shutters, treated wood ramp, large cupola with Rooster weathervane.

Make the Most of It

Everyone needs a shed for different reasons, all of which have endless possibilities. We give you the ability to insert larger doors or change the material of the structure. This allows you to store items and keep them protected year-round.

Maximize Your Measurement

Remember that if you increase the size of your shed even slightly, you allow the flexibility to add better storage systems. Give yourself at least 1-2 feet from the walls on the inside to allow room for bins and organization systems.

Safe in all Seasons

Home to your golf clubs, tool kit, your household's bicycles, gardening supplies, and so much more! Of course, you don't need access to these year-round, so a shed is perfect for keeping everything together and well-protected.



ELLIOT
10'x20'

Special touches: SmartSide in Chestnut stain with Dark Spruce trim, steel roof in Bronze, 33" Cottage Basic door, 66" Pushbar doors, and 20"x36" wood windows.



LEXINGTON
14'x16'

Special touches: SmartSide in Willow with Soft White trim and Nature accents, steel roof in Galvanized, 33" and 66" doors, 28"x29" wood windows, awning over windows and one set of two exterior plant shelves.

“ I CAN'T GET OVER THE QUALITY OF THE SHED.
THE WORKMANSHIP WAS INCREDIBLE! ”

—EVAN G.



NEWPORT
12'x20'

Special touches: 8/12 roof pitch, SmartSide in Driftwood with Soft White trim and Walnut accents, Weathered Wood shingles, 33" and 66" Craftsman Crossbuck doors, 28"x29" wood windows, 60"x10" aluminum window, arched timber braces, Z-style shutters, flower boxes, large cupola and Eagle weathervane.

Beautify Your Landscape

Adding a shed to your property enhances the outdoor appeal of your yard, in addition to giving you great functional features for exactly what you need.



BOSTON, 10'x12'

Special touches: SmartSide in Khaki with Devon Cream trim, Weathered Wood shingles, 54" Crossbuck doors and aluminum threshold.



ONTARIO, 12'x16'

Special touches: SmartSide in Riverway with Devon Cream trim and Weathered Wood shingles. 33" and 66" Craftsman Stall doors, 30"x36" aluminum windows, Crossbar shutters and a large cupola.



SKYLINE, 14'x16'

Special touches: 12/12 roof pitch, SmartLap siding and trim in Driftwood, Cedar stain on door, Black shingles, 24"x24" aluminum window, 66" Cottage Braced doors, one set of two plant shelves, custom gutters.



HAMPTON, 12'x16'

Special touches: SmartSide in Navy with Soft White trim, Weathered Wood shingles, 33" and 66" Cottage Basic doors, 30"x36" aluminum windows, Z-style shutters and flower boxes.

STORAGE VS.

GET YOUR SHED TOGETHER

That missing piece of your backyard is filled in with a shed, ready to hold anything that comes to your creative mind! No idea is too big or small to carry out when it is what you have envisioned for your backyard addition.

SOMERSET 10'x14'

Special touches: SmartSide in Driftwood with Black Fox accents, Bronze steel roof, 33" and 66" Craftsman Stall doors, 28"x29" wood windows, crossbar shutters.

ORGANIZATION

CUSTOMIZE YOUR CREATION

Sheds help you organize your life. Whether you need to store larger items or smaller essentials like sporting goods, we have sizes that are perfect for your needs. Having in mind your ideal space is important as you begin the design process, especially with our easy-to-use ShedBuilder software. Whether you want to add storage or reorganize your space for living, working or playing, there are incredible options to suit your needs perfectly.

SKYLINE 12'x20'

Special touches: 8/12 roof pitch, SmartSide in Driftwood with Cedar accents, and Weathered Wood shingles. Pent roof, 30"x36" aluminum windows, 66" Craftsman Pushbar doors with aluminum threshold, medium coppertop cupola with copper finial.



“AS SOON AS
YOU BEGIN
TIDYING, YOUR
ENTIRE LIFE
GETS A FRESH
START.”

SKYLINE
20'x24'

Special touches: 8/12 roof pitch, SmartSide in Driftwood with Nature accents. Weathered Wood shingles, 8' walls, 94" Crossbuck door and 33" Cottage Crossbuck door with strap hinges, 28"x29" wood windows, copper pent roof, corbels, extra-large coppertop cupola with copper finial. The picturesque farmhouse look updates brilliantly with just a touch of copper luxe.

Upgrade Your Interior With This Simple Step

Display your items in a way that allows you to see everything at once. Utilizing your wall space in addition to the square footage will allow you to get the most out of your shed while making for a better work environment. Combine lofts, workbenches, shelves, and wall systems to create a more functional space.



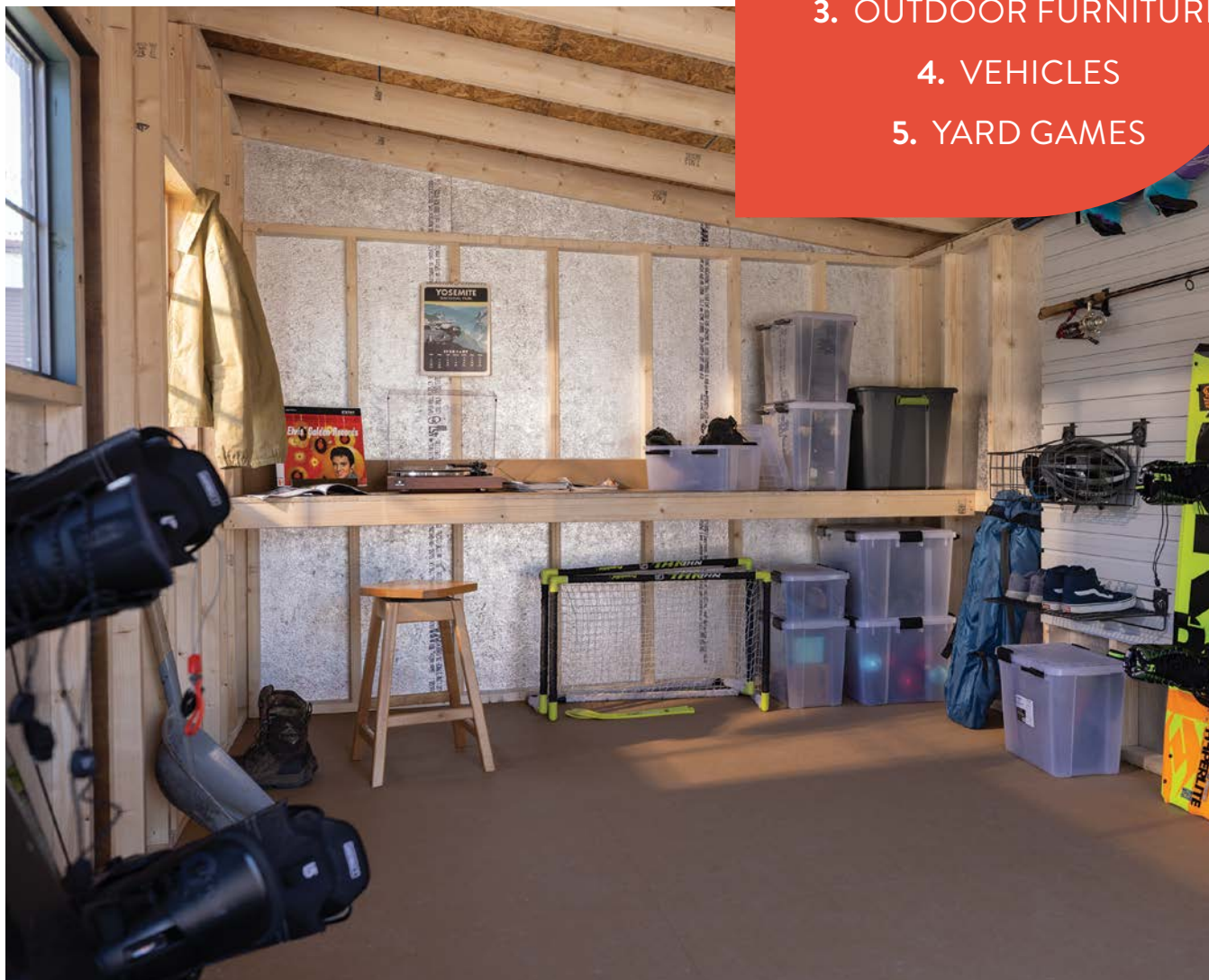


Tips for Keeping it Tidy!

That mason jar that has been taking up room in your kitchen cupboard is now able to serve an entirely new purpose. Use transparent containers like these to help you organize the smaller contents of your shed. Whether they sit on a shelf or workbench, they are so useful. The possibilities are endless when it comes to making your space your own!

TOP ITEMS TO STORE

1. GARDENING TOOLS
2. SPORTS EQUIPMENT
3. OUTDOOR FURNITURE
4. VEHICLES
5. YARD GAMES





Uniquely Your Space

WHERE YOU CAN MAKE EVERY DETAIL
TAILORED TO YOUR DREAM AREA.

What is unique about your shed? Everything from the style to the contents speaks to you and your lifestyle. If you want ideas or need to learn more about your options, we can help guide the process.

HARTFORD
10'x10'

Special touches: 8/12 roof pitch, SmartSide in Riverway with Soft White trim and Weathered Wood shingles. 72" fiberglass double entry doors and 30"x36" aluminum windows. A custom interior features wallboard, pine-paneled ceiling, electrical wiring and a vented heating/cooling unit.

Her Peaceful Hideaway

The personal escape right in your backyard for all the things “you” can be. Maybe you need a sanctuary for peace and quiet. Or a designated space for a new hobby. With our customizable sheds, you can make a statement that feels authentic to you. Whether you want natural light or specific features, build your space beautifully.

Enliven Your Library

Cozy up with warm tea and a good book and start relaxing in your new getaway. Make this a comfortable room where you unwind after a long day or create an organized spot to start your morning. As an office or a personal reading room, a she shed is always a great solution for additional space.



NEWPORT 14'x18'

Special touches: 8/12 roof pitch, Smartside in Driftwood with Devon Cream accents, Weathered Wood shingles, arched timber braces, corbels, custom coppertop cupola, 33" and 66" Craftsman Crossbuck doors, awning over double door, four 28"x29" wood windows, two 60" flower boxes, lofts and workbenches.



SKYLINE
10'x12'

Special touches: 8/12 roof pitch, SmartSide siding and trim in Soft White, custom shingles, 15-light 36" fiberglass door, eight 24"x36" aluminum windows, two 24" flower boxes, a large cupola, lofts and a workbench. Gutters by owner. Not shown: 66" Craftsman Pushbar doors.



More than a Man Cave

Whether you need space to showcase your sports memorabilia collection or room for your favorite motorcycle, a man cave is where it happens.

Get Space for the Whole Squad

Having a private indoor space is a sweet addition to your guys' night, especially when you make the rules. No need to worry about waking up your kids on a school night during a late-night Texas hold 'em tournament. Make sure to add extra square feet so that everyone is comfortable.

Begin with Tech in Mind

Access to a mini fridge, large-screen TV, video game console and sound system makes you a candidate for host of the year. Our sheds can be connected to electricity so you can build a proper modern man cave.

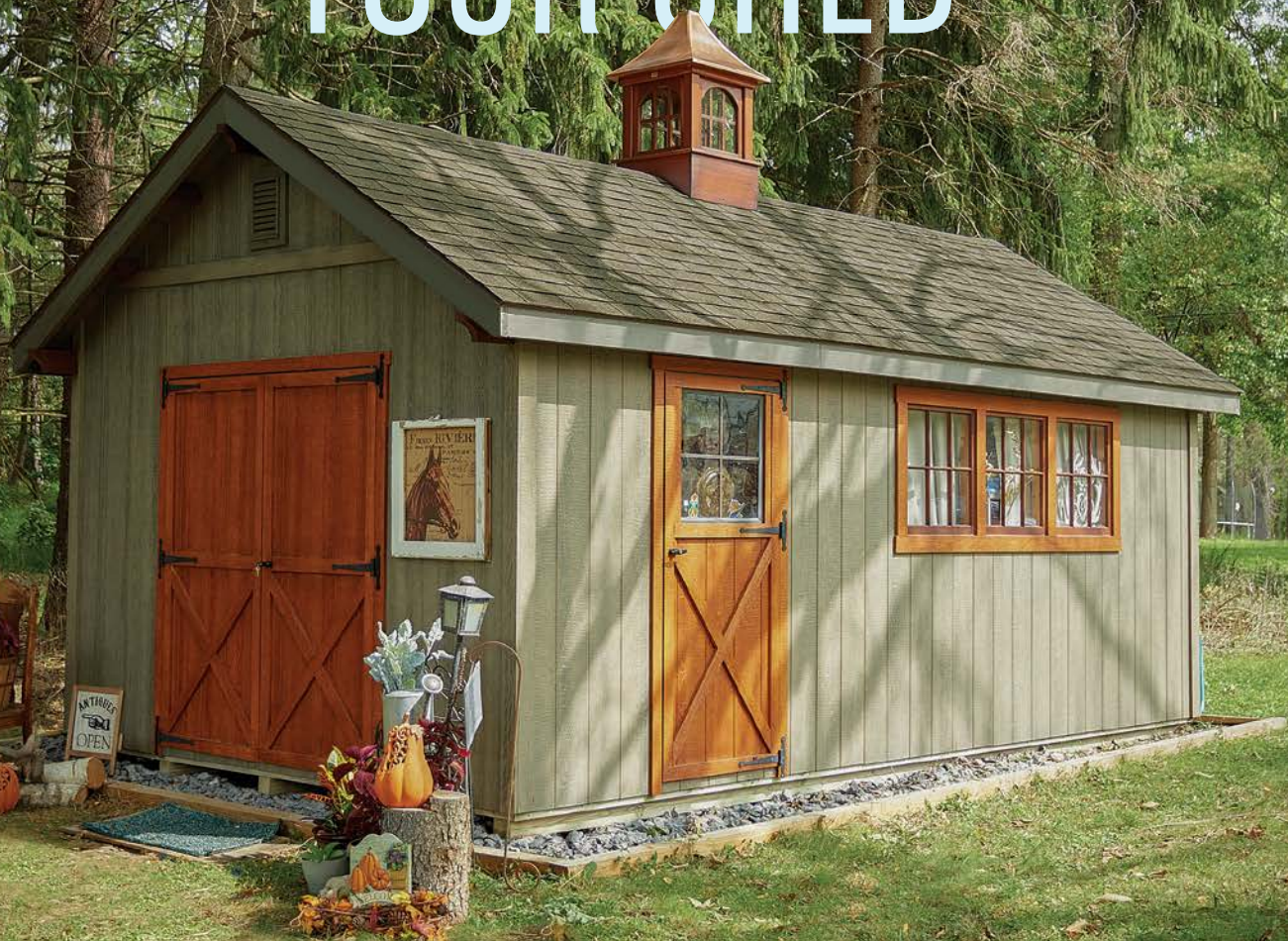


PAYSON
12'x16'

Special touches: SmartSide siding and trim in Nature, posts and porch deck in a clear finish, Brown shingles, 66" Cottage Basic doors, 20"x36" and 28"x29" wood windows.

70

WAYS TO USE YOUR SHED



SKYLINE
12'x20'

Special touches: 8/12 roof pitch, SmartSide in Driftwood with Nature accents, Weathered Wood shingles, 33" Cottage Crossbuck door and 66" Crossbuck door with strap hinges, 28"x29" wood windows, corbels and custom coppertop cupola.

Outdoor Life

1. Gardening tool storage and potting shed
2. Rock climbing practice gym
3. Hunting trophy room and gun locker
4. Mountain bike and gear
5. Motorcycle workroom
6. Succulents showcase
7. Camping gear storehouse and prep room
8. Boat building workshop
9. Classic car repair shop
10. Greenhouse

Always Learning

11. Personal library
12. Backyard office and meeting room
13. Star gazing observatory
14. Book club meeting room
15. Viral video creator studio

Creative Studios

16. Photo darkroom
17. Painting studio
18. Clothing design and workshop
19. Art gallery
20. Knitting room
21. Quilting room
22. Screen-printing studio
23. Scrapbooking craftroom
24. Poetry writing nook
25. Music recording studio
26. Soap-making workroom
27. Puppet studio and stage
28. Gemology and jewelry center
29. Doll-making studio
30. Furniture & woodworking workshop
31. Voice lesson studio
32. Pottery & ceramic arts studio

Foodie Lifestyle

33. Coffee roasting café
34. Baker's test kitchen
35. Cookbook photography space
36. Breakfast bodega
37. Wine tasting room
38. Cheesemaking studio
39. Cookie baking and decorating kitchen
40. Grilling prep house

Get Your Game On

41. Video game center
42. Poker tournament room



58. Antique collection
59. Origami workspace and showroom
60. Tea room

Wellness

61. Dance studio
62. Indoor pickleball court
63. Workout studio
64. Axe throwing station
65. Weightlifting gym
66. Donation collection building
67. Parkour course
68. Massage room
69. Cycling storage center
70. Golf simulator

43. Gameday sports bar
44. Regulation-sized dart arena
45. Retro arcade room
46. Puzzle emporium
47. Duckpin bowling lane
48. Movie theater
49. VR gameroom

All About You

50. Memorabilia showcase
51. Model airplane building
52. Ultimate model train setup
53. Rock tumbling center
54. Hair and nail styling salon
55. Day trader headquarters
56. Beach house
57. Dream shoe closet





**NEWPORT
14'x16'**

Special touches: 8/12 roof pitch, arched timber braces, SmartLap in Barn Red with Nature accents, Weathered Wood shingles, 33" and 66" Cottage Basic doors, 28"x29" wood windows, corbels, large wood vents, awning and custom coppertop cupola.

“THIS WAS THE BEST EXPERIENCE I EVER HAD PURCHASING ANYTHING. THE QUALITY OF THEIR STRUCTURES IS AMAZING.” -JT





HORIZON
10'x16'

Special touches: SmartLap in Cedar, Weathered Wood shingles, 33" and 66" Craftsman Stall doors, 28"x29" wood windows, large wood vents.

The Cozy Camping Collection

Bonfire possibilities become endless when you have a structure built for your backyard or remote location.

Left: SCIOTO, 20'x20'

Special touches: SmartSide in Sage, Khaki trim with Nature accents, Tan shingles, large cupola, 66" Cottage Braced double doors, 28"x29" wood windows and 30"x36" aluminum windows with Z-style shutters.

Hunting, Fishing or an Ideal "Glamping" Cabin

Those who enjoy the camping lifestyle but want more than a tent can set up a couple of beds, chairs, and a table to give you a year-round camping vibe! Perfect for storing your hunting or fishing gear or your kayaks or canoe, especially in a remote location.

Get to Gardening!

Start digging in the soil, not digging around looking for your spade and gloves! Accessorize your space so you can find what you need and get back outdoors.

GARDENER
8'x10'

Special touches: SmartSide painted Latte, with Soft White and Pumpkin accents, Weathered Wood shingles, 33" Craftsman Braced door, 24"x36" aluminum window (not shown) and a small cupola.



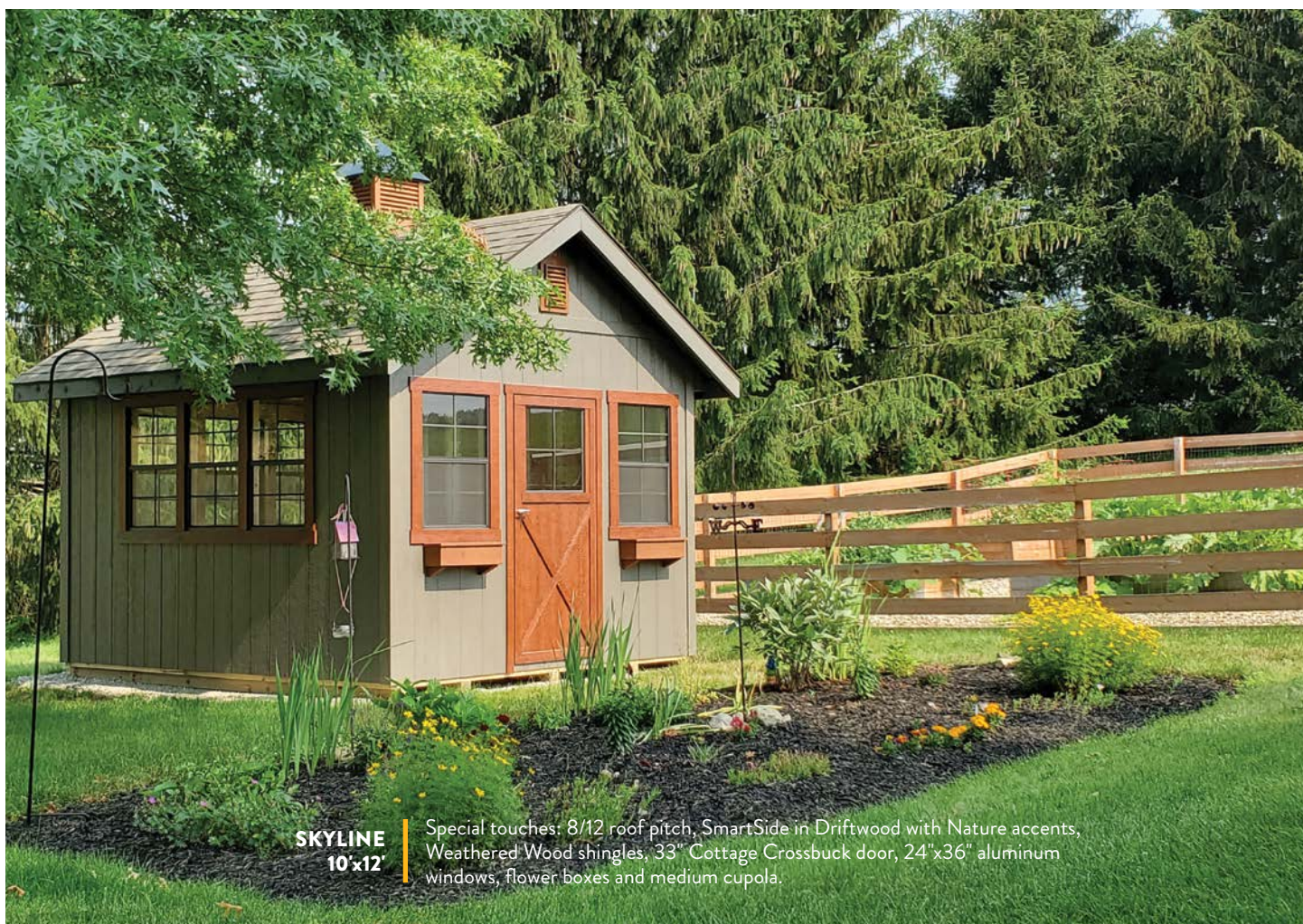
BACKYARD POTTING SHED

Sheds with lighting options and windows make for happier plants. A shelf brings your buds right next to the natural light.



LAWN TOOLS + LARGE EQUIPMENT

Your mower, tiller or other large equipment for lawn and garden care can be brought together and out of your garage with the right shed. Keep these items accessible when you need them and out of the way when you don't.



SKYLINE 10'x12'

Special touches: 8/12 roof pitch, SmartSide in Driftwood with Nature accents, Weathered Wood shingles, 33" Cottage Crossbuck door, 24"x36" aluminum windows, flower boxes and medium cupola.

Oh, to Have an Office Shed

Imagine a beautifully laid-out office without the distractions everywhere around your home. Get organized with shelving that allows for easy access to all of your office supplies, and furniture that makes for a comfortable, yet productive, working environment.

Natural light and fresh air from windows keep your home office a comfortable place to work. Or outfit it with air conditioning and a space heater to allow for sustainable comfort all year. Don't forget to find a corner for a coffee maker or water cooler.

Stay productive in a beautiful setting, steps from your home!





SOMERSET
10'X16'

Special touches: SmartSide in Soft White, Dark Spruce trim, Light Gray shingles, 33" Cottage Basic door, 24"x36" vinyl windows with flower boxes. Custom interior finish by customer.

Where to Start With Your Hobby Shed

Rather than trying to find a spare room in your home, you can create a space that is perfect for your hobby. No matter your interest, a cozy shed that is dedicated to it will keep you creative, productive, organized and inspired.

SKYLINE
10'x10'

Special touches: 8/12 roof pitch, SmartSide in Driftwood stain and Turquoise accents, 20"x36" and 28"x29" wood windows and Weathered Wood shingles. Not shown: 33" Cottage Stall door.



PAYSON
12'x16'

Special touches: SmartSide in Spun Gold with Soft White trim and accents in Nature and Cherry. Tan Shingles, 33" and 66" Cottage Basic doors, roll-up door, flower boxes, interior and exterior serving shelves, and 30"x36" aluminum windows.

PRO TIP

If you are designing a shed around your favorite hobby, it's important to be realistic with the dimensions of your space. For desks, larger chairs or equipment, leave extra room to move around and make sure your doors are large enough to get everything in!



LEXINGTON
12'x16'

Special touches: SmartSide in Willow with Soft White trim and Nature accents, steel roof in Galvanized, 33" and 66" Pushbar doors, 24"x36" aluminum windows and Crossbar shutters.

A Backyard to Fall in Love With

Your life is a series of moments. Memories. Laughter and tears, consolation and camaraderie. Summer evenings with all your favorite people by your side, reliving stories that happened on nights like this.

Surround yourself with a backyard that will cater to these evenings. A setup that makes it easy to pause...and smell the flowers. Build the backyard that you have worked your life to create—everything else will follow.

“EXCELLENT EXPERIENCE AT ALL LEVELS. VERY PROFESSIONAL CREW DID A GREAT JOB IN NO TIME AT ALL. IT IS REFRESHING TO GET SUCH EXCELLENT SERVICE AND PRODUCTS.”

– BILL K.



MARCO
10'x10'

Special touches: five-sided footprint. SmartSide in Khaki with Sandstone trim, Black shingles, 15-light fiberglass doors, 24"x36" aluminum windows, 24" flower boxes, vinyl shutters.



SOMERSET
12'x20'

Special touches: SmartSide painted Ocean Mist with Devon Cream and Nature accents, Weathered Wood shingles, 33" and 66" Cottage Basic doors, 30"x36" aluminum windows, Crossbar shutters.

Little Bit of Living

HOME IS WHAT YOU MAKE IT, NO MATTER THE SIZE OF THE HOUSE OR THE VIEW OF THE BACKYARD.

A secluded weekend cabin where you can escape. A lovely suite for overnight guests. Even a modern starter home. Add the decorating touches to make it special, and call your shed a home.



FAIRVIEW
27'x32'

Special touches: SmartSide siding and trim in Butternut, Brown shingles, custom finish on porch deck and posts, 30"x36" and 24"x36" aluminum windows, 15-light fiberglass door, hand-peeled cedar posts and cedar gable kingpost trim.

A Modern-Day Starter Home

Who says you need to start your career in a typical home? A reimagined shed is the perfect way to build on your own terms.

Segmented Spaces

If you think the inside of this home is one long space, think again. This homeowner used walls to separate the living room and kitchen from the bathroom, laundry and bedroom—and still has a hallway to connect each area seamlessly. An extended porch allows for a covered grilling area in the back and outdoor dining with a view in the front.





CUSTOM ELLIOT
16'x48'

Special Touches: 8' wall, Smartside siding and trim in Driftwood, black metal roof, custom windows and doors, custom overhang.

Tiny Stays

Staycation

Ideal for those looking to break everyday routines, without having to travel for hours and rent a place made for someone else. This is the ultimate vacation designed for you!

A Natural Light

Large sliding glass doors and plenty of windows allow you to enjoy the natural surroundings of your tiny home and capture as much daylight as possible.



A-FRAME COTTAGE
24'x40'

Special touches: custom siding, cathedral ceiling, custom kitchen, sleeping loft with stairs, bathroom(s), much more. A-Frames go up in a flash, usually 2-3 days.



“OUR SHED IS WELL BUILT, SITE WAS LEFT CLEAN, COMMUNICATION WAS ALWAYS OUTSTANDING..”

-STEVE S.



HORIZON
12'x24'

Special Touches: 8/12 roof pitch, custom log siding, Weathered Wood shingles, sliding patio door, 30"x36" vinyl windows, hand-peeled cedar porch posts.



**EXTRA-CUSTOM
LEXINGTON
20'x48'**

Special touches: stone and stucco siding, roof pitch increased for a cathedral ceiling and loft for guest suites/changing rooms. On the first floor, you'll find a full-service kitchen and a game room.

Bring the Party Inside

Pool houses can be both a place for changing rooms and a full-fledged extension of the enjoyment a pool brings to your life.

With a little planning, your pool house can be a place to relax when you need a break from the sun with the addition of a bar, ping pong table and whatever else tickles your fancy. Like this one, it could also serve as a guest house, complete with a kitchen and upstairs bedrooms.

And don't forget a closet to store away the pool noodles and floats!



A Perfect Spot in the Woods

Is an off-the-grid lifestyle right for you? With the right location and expansive options to match, you can build a great home to last for years.

Rustic Yet Modern

Get the best of both worlds by designing a space that appeals to your backwoods style and lets you go entirely off the grid. With propane gas, solar panels, well water and even a bio-filter septic system, your wooded retreat can be a self-sufficient, contemporary getaway.

Materials Matter

For many owners, the top priority for a home like this is making sure the materials and construction are right for the conditions. The ability to have roofing and siding options, like the steel roof shown here, make a world of difference in the long run.






FAIRVIEW
27'x38'

Special touches: Custom shake siding with Bronze steel roofing.

GARAGES GIVE MORE SPACE



A well designed garage is the ultimate step in organizing your life. Cars and large vehicles? Check. Storage for smaller items? Check. Dream workshop? Check. With the right plan and shed model, a garage can check off every box.



**SKYLINE INSPIRED GARAGES,
32'x54', AND 16'x28'**

A few of many special touches: 12/12 roof pitch with cathedral ceiling. Not shown: a full-height foundation gives this L-shaped garage a full walkout on the far side.

Your Garage, Your Way

When it comes to your dream workshop, a right-sized garage brings all your tools together at an arm's length. Workbenches, storage lofts and interior shelving are easy ways to organize your garage. If you want to bring larger items into the space—like tool cabinets or a table saw—and still have room to move around, simply extend the length or width when planning.

Garages should blend in on your property without seeming like an afterthought. We can match the style and color to make it a natural extension of your home!





SKYLINE
24'x24'

Special Touches: 8/12 roof pitch, 8' walls, Smartside in Soft White with Midnight Black trim, Black steel roofing, 16'x7' stockton III garage door with black hardware, custom pent roof, 9-light fiberglass door, 30"x36" windows, corbels, coppertop cupola with finial, concrete floor by customer.

Designing for The Classics

Protecting your vehicles—whether a historic beauty or your everyday workhorse—is important. The right garage will define how this shelter can make the most of your life, either as a functional space or a place for pool and cards.

When you are not sure what you need, our team can advise what direction is the best fit for you. You might want to begin by designing it yourself in our virtual Garage Builder.



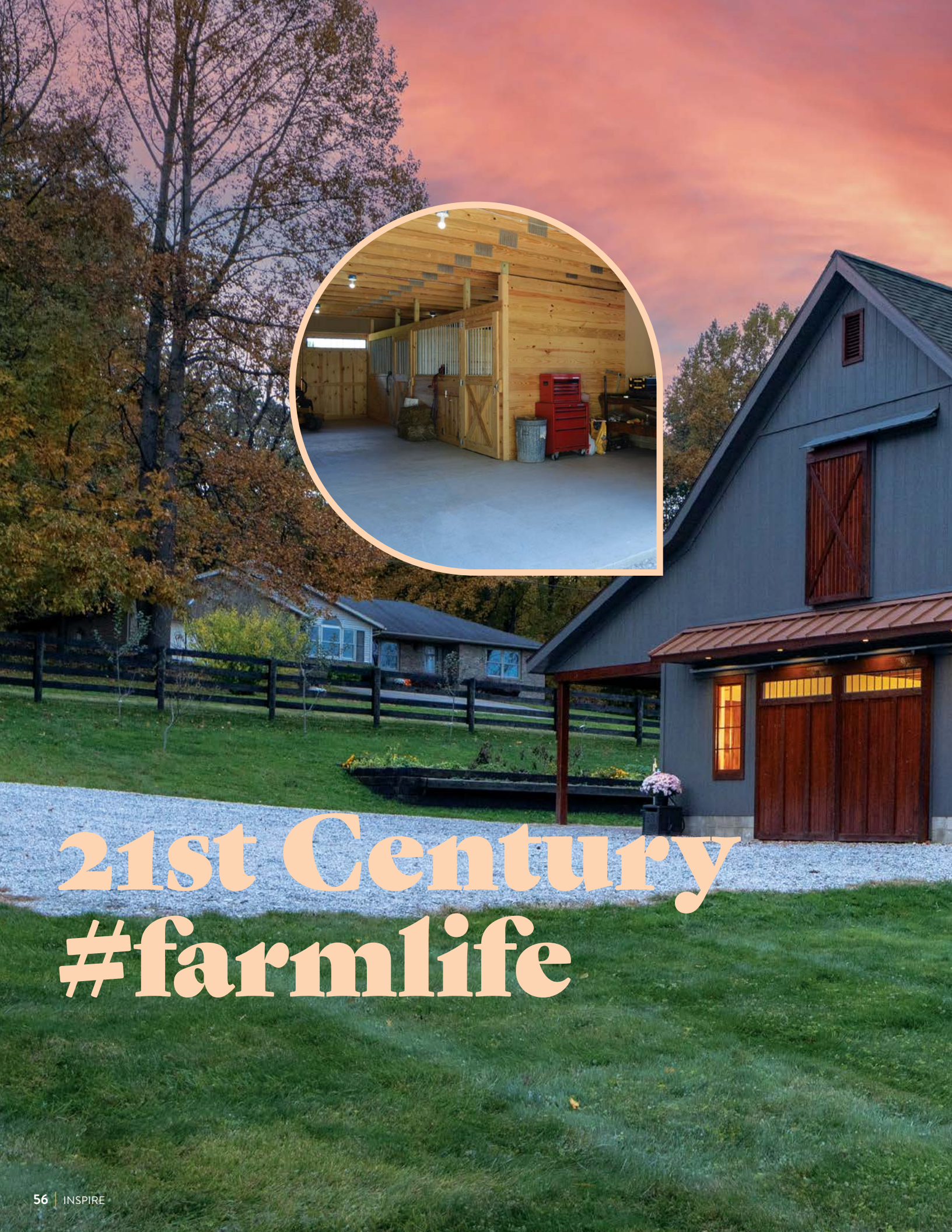
HARTFORD
12'x24'

Special touches: Smartside in Ocean Mist with Soft White trim, 8' side walls, 9'x7' overhead door, 33" Pushbar door, Medium Gray shingles.



CUSTOM GARAGE
24'x40'

Special Touches: 4/12 roof pitch, vinyl siding in Flint with white accents, Black shingles, 9-light fiberglass door with custom pent roof, Arched Stockton garage doors with black decorative hardware, 30"x36" vinyl windows with black vinyl shutters, 8' eave overhang, coppertop cupola with finial, concrete floor & gutters by customer



21st Century #farmlife



Whether you keep chickens on your suburban half-acre or a thousand acre farm, there is a shed that can make your day-to-day farming more enjoyable and productive.

**CUSTOMIZED
LEXINGTON
28'x36'**

Smartside stained Driftwood with Nature accents, Weathered Wood shingles, copper pent roof, cupola with finial. This big, 28'x36' barn is complete with horse stalls, a workshop, and stairs to a full second floor. Resting on a concrete floor, it features comfortable overhangs shading both sides and doors hung from rails the old-fashioned way.

BROOKSIDE, 10'x16'

Special touches: Soft White with Nature on the porch post and deck. 33" Craftsman Braced door, 28"x29" wood windows, Crossbar shutters, flower boxes, steel roof in Galvanized. Not shown: double doors for the mower and tiller, a potting bench under the windows.

**HARTFORD
10'x16'**

Special touches: SmartSide in Driftwood with Nature accents. Weathered Wood shingles, 66" Cottage Crossbuck double doors, 24"x36" aluminum windows.





Country Living

Get Your Stables in Order

Our stables come with thoughtful elements and options designed specifically for housing anything equine. These include haylofts, kickboards and reinforced perimeters for delivery without a floor. You can order stables with optional tackrooms, dutch doors and/or our handsome red gates that swing wide open.



HARTFORD STABLE
12'x28'

Special touches: SmartSide in Cedar stain, steel roof in Galvanized, 28"x29" wood windows with Cherry accent paint, large cupola and horse weathervane. Red gates are 8' wide, and stables include 4'-high kickboards, a 6'-high divider, and a reinforced perimeter for delivery without a floor. Dutch doors are available.



PRO TIP

Add a little color to your farmstead! Whether on the doors, windows or across the walls, a splash of a strong color can accentuate a nearby flower garden or simply stand out in the landscape.

MYSTIC 10'x16'

Special touches: SmartSide siding and trim in Cedar stain, Brown shingles, 54" Braced doors and 24"x36" aluminum windows. Inside: extra-depth lofts.



DELAWARE 8'x10'

Special touches: SmartSide in Willow, Devon Cream trim and Viva Violet accent. Weathered Wood shingles, 66" Cottage Stall doors, 24"x24" aluminum windows, flower box and cupola.

Life on the Farm is Made Easier

HERE'S THE PITCH!

A roof's pitch is designed to keep snow from accumulating. But beyond that, there are other factors to consider. While a gambrel roof cuts the snow load in half, it also adds storage capacity to the loft. A saltbox style—when one side's pitch is different than the other's—gives you extra headroom. And stylistically, it adds a little New England flair!



SPRINGFIELD
10'x14'

Special touches: SmartSide in Dark Spruce, Brown shingles, 54" Pushbar double doors with strap hinges, 28"x29" and 20"x36" wood windows with Dark Spruce grills.

Every King and Queen Needs a Castle!

When kids have a place that they consider their own, their creativity and confidence both skyrocket. They imagine a world that can be, a dream realized.

Child-safe glass in the windows and colors that they can choose help make these a play place that both you and they will love. Adult-sized doors in the side or back let you join in the fun.



CASTLE
8'x8'

Special KidzSpace touches: SmartSide in Charcoal Gray with Soft White trim and Cherry doors, Medium Gray shingles.



CLUBHOUSE
8'x12'

Special KidzSpace touches: SmartSide in Soft White with Pumpkin, Turquoise and Grass accents with Medium Gray shingles.



VICTORIAN
8'x10'

Special KidzSpace touches: SmartSide in Navy and Soft White accents with Black shingles.

“DESIGN YOUR SHED
AND LIVE YOUR
LIFE AS YOUR MOST
AUTHENTIC SELF.”



SKYLINE
14'x20'

Special Touches: 4/12 Roof Pitch, vinyl siding in Flint with White accents, Black shingles, 9-Light fiberglass door, 24"x36" vinyl windows, Black vinyl shutters, custom porch, gutters by customer.



SECURE YOUR SHED

Features that Seal the Deal

It is all in the details when it comes to ensuring your shed is protecting its contents in every way possible. When it comes to extra features a prize goes to the fact that your shed will have a lock that is not only keyed, but uniquely keyed. This allows you, and only you, to access your shed.

Double Down on Hinge Support

If a door has ordinary, exposed hinges, it's easy to take the door off the hinges. Just unscrew a few screws. Piano hinges make that impossible, since they are hidden from both thieves and the weather. Made of aluminum, they never rust, and besides that, our six-foot piano hinges keep the door connected all along its edge, supporting it evenly and preventing damage from daily use, a strong gust of wind or even a direct impact.

How Can I Get Top Security for My Shed Doors?

When you buy here, you can leave your security concerns to us. All our sheds come standard with unique keyed locks and our exclusive six-foot piano hinges. They can withstand years of use and are able to carry heavier, sturdier doors. Hinges and locks are essential elements for securing your shed. They increase the security of your shed and all the important things it houses. It's one less thing to worry about!



7 SMART REASONS TO BUY HERE

Settle for an ordinary shed? Never! No need to, whatever your budget. Our sheds look great, increase property value and give you space for storage, workshops and entertaining. Every time you use it, every time you look at it, you'll be glad you bought it here.

01 MORE SECURE

- a. 6' no-rust aluminum hinges
- b. Keyed locks

02 BETTER DESIGN

- a. Architectural lines, classic proportions
- b. A professional palette of paints & stains
- c. Many upgrades and options

03 STRENGTH, TOP TO BOTTOM

- a. 6" fascia
- b. Premium clear studs, 16" on center
- c. SmartFloor strength, and you can double it!
- d. Joists installed on edge

04 LATEST TECHNOLOGY

- a. Panelization: straighter, tighter, stronger
- b. Baked-on finishes last longer

05 TREATED, ENGINEERED WOOD

- a. Authentic, renewable resource
- b. Made with less waste
- c. Treated walls, trim, floors & skids

06 GUARANTEED, TOP TO BOTTOM

- a. 30-year dimensional shingles
- b. Industry's top 5/20-year warranties

07 FAST INSTALLATION

- a. Factory-built and installed in about an hour
- b. Built on your site quickly and cleanly

COMPLETE BUYER'S GUIDE



NEWPORT
12'x24'

Special Touches: 8/12 roof pitch, 8' wall, with custom paint, Weathered Wood shingles, arched timber braces (3 instead of standard 2), Cottage basic door (custom 80" height), 24"x36" windows, corbels, custom 5' eave overhang, custom cupola.

COMPLETE BUYER'S GUIDE

MODEL | **PRODUCT LINE**, page number(s), roof style and other product information (side and/or end entry unless noted).



BOSTON | NEW ENGLAND, pp. 13, 71
Gambrel. 4' sidewalls, end entry only.



BROOKSIDE | SIGNATURE,* p. 58
Gable, 4/12 - 12/12 pitch. 6'6" sidewalls. 3'x8' porch.
Single & double doors. Dimensions include porch.



HAMPTON | SIGNATURE, p. 13
Hip roof, 8/12 pitch. 6'6" sidewalls.*



DELAWARE | NEW ENGLAND, p. 60
Saltbox. 5'6" & 6'6" sidewalls, side entry only.



ELLIOT | SIGNATURE, pp. 10, 29, 42, 43
Shed roof, 6'6" & 8' sidewalls. (Wall height varies slightly for delivery purposes.)



HORIZON | SIGNATURE, pp. 31, 45
Gable, 8/12 - 12/12 pitch. 6'6" sidewalls. 4'D porch.
Cathedral ceiling. Dimensions include porch.



HARTFORD | NEW ENGLAND,*
pp. 6, 22, 23, 54, 58, 71
Gable, 6'W -14'W: 4/12 - 8/12 pitch. 6'6" sidewalls.
16'W -24'W: 3.5/12 pitch. 7'2" sidewalls.



FAIRVIEW | SIGNATURE, pp. 40,41,
48, 49
Gable, 12/12 pitch. 4'D porch: 6'6" sidewalls. 7'D
porch: 8' sidewalls. Dimensions include porch.



LEXINGTON | SIGNATURE,* pp. 11, 37, 46,
47, 56, 57
Gable, 4/12 - 12/12 pitch. 6'6" sidewalls. 4'D porch.
Dimensions include porch.



MYSTIC | NEW ENGLAND, pp. 7, 60, 71
Gambrel. 6'6" sidewalls.



GARDENER | SIGNATURE, p. 32
Saltbox, 4' & 6'6" walls, translucent roof,
workbench and 16" shelf.



MARCO | SIGNATURE, p. 38
5-sided design. 6'6" sidewalls.

* 12' Factory-Built sheds have a 7/12 pitch



NEWPORT | SIGNATURE pp. 8, 12, 24, 30, 67

Gable, extended eave, 4/12 - 12/12 pitch.
8' & 10'W: 26" eave, 12' & wider: 36" eave.
8'W - 20'W: 6'6" sidewalls, 24'W: 8' sidewalls.



SKYLINE | SIGNATURE, pp. 6, 13, 15, 16, 17, 25, 28, 29, 33, 36, 50, 51, 53, 64, 70, 73, 79, Back Cover

Gable, 4/12 - 12/12 pitch. 8'W - 20'W: 6'6" sidewalls, 24'W: 8' sidewalls.*



STABLES, p. 59

Stable & tack room. Hartford, Mystic or Skyline.
6' divider (OSB on one side), 4' kickboard, 8' opening, reinforced perimeter, no floor.



ONTARIO | SIGNATURE, pp. 7, 13

Gambrel, 6'6" sidewalls, 24'W: 8' sidewalls, 2"x10" top plate.



SOMERSET | SIGNATURE, pp. 2, 14, 18, 34, 39, 81

Gable, 8/12 pitch. 6'6" sidewalls. Cathedral ceiling, 4 or 5 clerestory windows, 2 lofts: 24"D in 12'L, 24"D in 14'L, 36"D in 16'L, 60"D in 20'L, 72"D in 24'L.*



CASTLE | KIDZSPACE, p. 62

Saltbox, 4' & 6'6" sidewalls. Adult door on right. Four 14"x21" windows, loft with ladder. Optional deck comes w/fancy white railings.



PAYSON | SIGNATURE, pp. 27, 37

Hip roof, 8/12 pitch, 4'D porch, twin posts, 6'6" sidewalls. Dimensions include porch.



SPRINGFIELD | SIGNATURE, p. 61

Saltbox, 6'6" sidewalls, side entry only.



CLUBHOUSE | KIDZSPACE, p. 62

Gable, 10/12 pitch, 4' sidewalls. Adult door in back. Five 14"x21" & one octagon window, loft w/ladder. 8'x4' porch. Dimensions include porch.



SCIOTO | SIGNATURE, p. 30

Gambrel roof. 4'D porch: 6'6" sidewalls. 7'D porch: 8' sidewalls. Dimensions include porch.



RAISED HENRIETTA CHICKEN COOP

Saltbox, raised 12" above ground, 6'x8'. Shown with optional screened porch. Two 14"x21" windows, 6 easy-access nesting boxes (3 with screened porch), roosting bar.



VICTORIAN | KIDZSPACE, pp. 63

Gable, 10/12 pitch, 4' sidewalls. Adult door on right. Two 14"x21" windows, loft with ladder. Optional deck comes w/fancy white railings.

HOW TO UPGRADE TO PERFECTION

The Standards, p. 80, list specs by series. Much is included in the base price models shown at left, and the many options and accessories let you upgrade as much or as little as you wish. Built-on-site sheds come as shown, in primer coat, with paint or stain available. Factory-built sheds come with two paints or stains for siding and trim. Additional colors available. Below are two 8'x12' Skylines, shown with and without corner boards painted as trim and upgraded a little or very well indeed.



A LIGHT TOUCH, BUT NICE

The door is widened to 66" and its style upgraded to Cottage Stall. A 30"x36" window is at home here with Crossbar shutters.



MORE IS MORE

More windows! These are 28"x29" wood windows with flower boxes. Corbels decorate the eaves, and a cupola reigns above. Trim paint now extends to corbels, and an accent color is the coup de grace.

CATSKILL SHEDS. WORKHORSE CONSTRUCTION. NO-NONSENSE.

100% Factory-built of the tightest specs and ready for delivery. Exclusively SmartSide, overbuilt for strength and available only with a primer coat. 8 upgrades available, 3 ways to buy fast – cash or credit, rent-to-own or 12 months/no interest. Put extra storage or new workspace wherever you've got a job to do.



ABOVE: HARTFORD, 12'x16'

End doors, Black shingles.
Upgrade: 8' walls.

L: BOSTON, 10'x10'

Weathered Wood shingles, no upgrades.

R: HARTFORD, 10'x16'

Side doors, Weathered Wood shingles.
Upgrade: 7/12 roof pitch.



L: MYSTIC, 10'x16'

Side doors, Black shingles.
Upgrade: 24"x36" windows.

R: MYSTIC, 12'x24'

Upgrade: Garage door, 33" doors,
Weathered Wood shingles

AVAILABLE UPGRADES

1. Increase 54" double door width to 66"
2. Replace double door with insulated garage door
3. Add a 33" single door
4. Increase wall height to 8' (Hartford)
5. Add 24"x36" single-hung windows
6. Add 2' or 4' storage loft
7. Aluminum Threshold
8. Metal Ramps





TEXTURED EXTERIOR


BRIGHT INTERIOR
LP SMARTSIDE

LP SMARTSIDE® PRECISION PANELS

SmartSide is engineered to last longer with cedar grain textured exteriors and bright SilverTech interiors.

8" Pine cove siding available.



6" LP SMARTLAP



WHAT TO LOOK FOR IN LAP SIDING

Our SmartLap siding is better because it is designed with clear drip paths that channel rainwater away. This prevents wicking to the inside, which can cause rot.



SMARTSIDE®
TRIM & SIDING

STANDARD PAINTS & STAINS

Soft White also available.



SPUN GOLD



SANDSTONE



KHAKI



CLAY ROCK



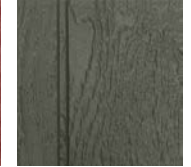
OCEAN MIST



NANTUCKET



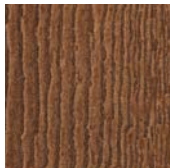
BARN RED



CHARCOAL GRAY



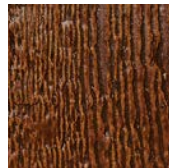
CEDAR STAIN



BUTTERNUT STAIN

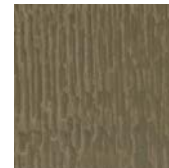


NATURE STAIN


MAHOGANY
STAIN

DRIFTWOOD
STAIN


CHESTNUT STAIN


SPANISH MOSS
STAIN


WALNUT STAIN

PREMIUM PAINTS

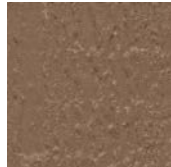
Using a premium paint for siding costs a little more.



DEVON CREAM



LATTE



OAK LEAF



MOODY BLUE



RIVERWAY



STILL WATER



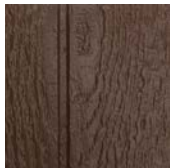
WILLOW



GREEN STONE



SAGE



COFFEE



BLACK FOX

SPLASHES



FACTORY-BUILT SHEDS come with two paints or stains. Choose any standard paint or stain for base areas and any paint or stain for trim. Premium paints and Splashes are available on siding at a modest upcharge. Additional colors can be applied for a minimal set-up charge per color.

BUILT-ON-SITE SHEDS come with a primer coat only. They are available with factory-applied paint or stains; cost varies slightly with paint or stain chosen, and free touch-up paint or stain is included. Please expect to do touch-ups after installation.

PORCH DECKS AND POSTS on factory-built sheds come with a clear finish. Built-on-site are unfinished.

FOR HOMEOWNER APPLICATION, paint or stain is available in the can.

ON VINYL SHEDS, SmartSide doors are painted or stained at no charge.

Printing does not allow for absolutely accurate hue representation.
See your Outdoor Center for actual samples.

WHERE FINISHES ARE APPLIED



- Base Areas
- Trim & Accent Areas
- A Siding
- B Corner boards
- C Fascia
- D Door panels
- E Corbels
- G Trim around doors (on shed)
- H Wood vents
- I Window trim
- J Wood shutters
- K Wood flower boxes
- L Cupola
- M Awning (not shown)
- N Wood windows (not shown)

FAVORITE ACCENT AREAS



Doors



Wood window grill & frame



Gable end shakes

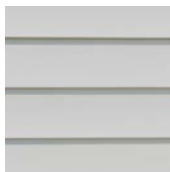


Shutters & window boxes

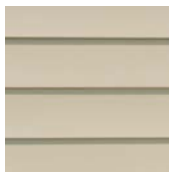
VINYL SIDING 5" straight. White also available.



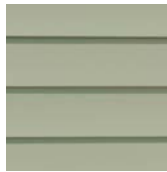
CREAM



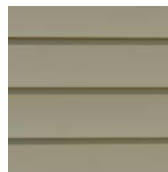
GRAY



ALMOND



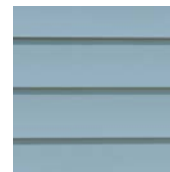
OLIVE



CLAY



FLINT



BLUE

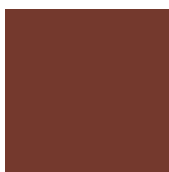
VINYL SHUTTERS White also available.



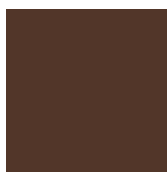
CLAY



WEATHERWOOD



REDWOOD



BROWN



MAROON

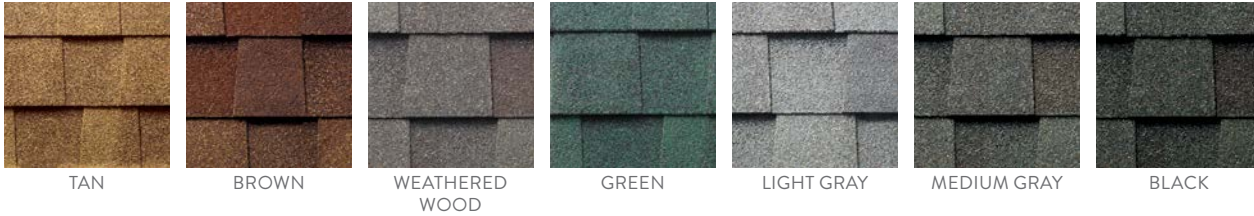


GREEN



BLACK

VINYL
SHUTTERS

SHINGLES 30-year, dimensional fiberglass. Some shingle colors have limited availability. Please inquire.**STEEL ROOFS** 29-gauge steel.**WINDOWS** Aluminum windows available in white or dark brown.

Single hung with grills



Aluminum, 14"x21", 24"x36"



Aluminum, 30"x36"

Stationary with grills



Aluminum, 24"x24", 23"x10", 60"x10"



Wood, 28"x29", 20"x36"



Drop Rods for wood doors

Cedar lattice awning
for windows or doors**GOOD BONES. WHY A WOOD DOOR IS YOUR TOP SHED CHOICE.**

You may wonder why we recommend a wood door for your shed over steel, fiberglass or vinyl. The answer has everything to do with winter. Homes have footers going down 3'-5', below the frost line. Sheds do not. This means sheds go through a freeze/thaw cycle every year, unnoticeable in walls, floor or roof, but affecting doors.

Our wood doors are designed to tolerate the freeze/thaw cycle in ways other materials cannot. Our doors have strong interior frames of 2"x3"s on edge. Their SmartSide and SmartTrim layers give all exposed surfaces SmartGuard protection – structural resistance to warping and chemical resistance to mold, dry rot and termites.

Wood doors take paint and stain beautifully, an advantage with any siding, including vinyl. They are excellent insulators and secure, especially with piano hinges and a keyed lock. Wood resists ordinary wear and tear and is easy to maintain, repair and refinish. The solid feel of wood is most traditional, most desirable and best for resale, which is why every other door is made to look like wood.

Should your door ever stick on a cold winter's day, the best thing to do is nothing! It will likely come back into position when the temps warm up. If not, the solution is simple: shim up a back corner. This little bit of correction can work wonders to re-align a door.

WOOD DOORS 72" h in SmartSide.

PUSHBAR (STANDARD)



STALL



BRACED



CROSSBUCK



ROUNDTOP

ARCHTOP
Double doors only.

COTTAGE STALL



COTTAGE BRACED



COTTAGE CROSSBUCK



CRAFTSMAN PUSHBAR



CRAFTSMAN STALL



CRAFTSMAN BRACED

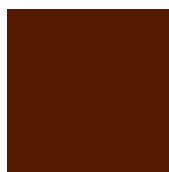
COTTAGE BASIC ALSO AVAILABLE. SEE PAGE 10, 13, 27, 30, 34, 37, 39

FIBERGLASS DOORS Not under warranty.CRAFTSMAN
CROSSBUCKPRE-HUNG
SOLID PANELPRE-HUNG
4-LIGHTPRE-HUNG
8-LIGHTPRE-HUNG
9-LIGHTPRE-HUNG
15-LIGHT**GARAGE DOORS** Also available in white. Insulated. Aluminum threshold included.

ALMOND



TAUPE



BROWN

If factory-built:

8'Wx7'H Regular clearance for Mystic, 10' and wider

8'Wx7'H Low clearance for Skyline and Hartford, 12' and wider

8'Wx6'4"H Low clearance for 10' Skyline, 10' and 12' Hartford

If parking a full-size vehicle on a SmartFloor, upgrade to 12" on center floor joists and/or a double SmartFloor.



Coppertop cedar cupolas
24"x24"
30"x30"
42"x42"



Cupolas, medium or large in unfinished, treated wood
17"x17"
22"x22"

WEATHERVANES For treated wood cupolas.



ROOSTER



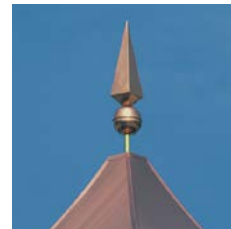
EAGLE



HORSE



SAILBOAT



COPPERTOP FINIAL

Available only on Coppertop cedar cupolas.



Reverse Gable Dormer with Wood Vent For Skyline in SmartSide or vinyl, includes wood vent. Not open to inside.



Loft, shelf, workbench
Lofts and shelves are 7/16" OSB. Lofts come in 24"D sections, installed at top of wall. Shelves are 16"D, installed at 18," 34" or 54". Workbenches are 24"D 3/4" SmartFloor with backsplash and rounded front, installed 35" high, below windows.



Exterior Plant Shelves
Set of two, 16" and 22", 5/4" treated shelves with arched timber braces below.



Strap hinges
Decorative and functional, replaces piano hinge.



Cedar Corbels
A classic decorative touch.



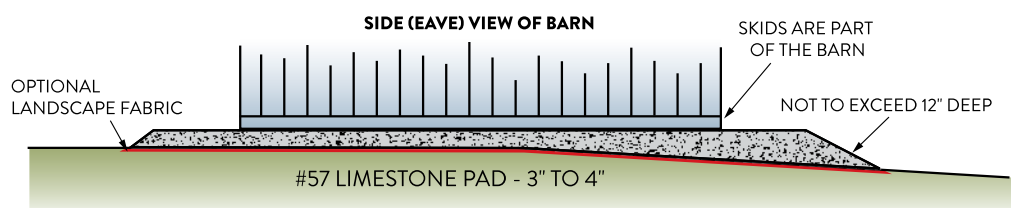
Portable Metal Ramps



Treated Ramps, 54" or 66"Wx48" deep

HOW TO PREPARE YOUR SITE

We recommend a 3"-4" deep limestone foundation pad 24" larger than shed dimensions (12" per side). Buyer is responsible for grading and foundation, building/zoning permits and any needed caulking.



See more installation details online, and talk with your local Outdoor Specialist for site prep options.



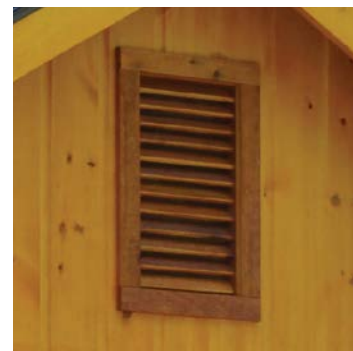
Pent Roof with Braces
In three sizes for Skylines and Ontarios, with shingles, 29-gauge exposed fastener steel, 24-gauge standing seam steel or standing seam copper.



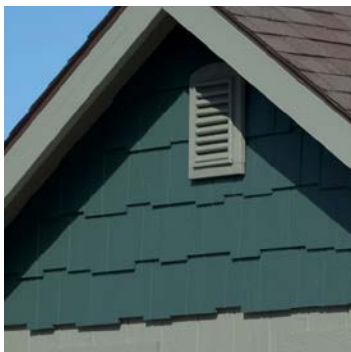
Arched Timber Brace
For the extended eaves of Newport.



Small Wood Vent
Replaces metal on New England.



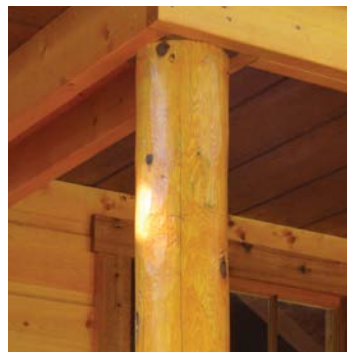
Large Wood Vent



Gable-End Shakes



Plank Flooring, 2"x8" treated tongue and groove. Not covered under warranty.



Hand-Peeled Round Cedar Porch Posts



Radiant Barrier
Reduces solar heat gain significantly and installs in place of regular roof sheathing.



This double SmartFloor with standard 16" OC joists on edge shows no deflection from a semi truck's weight. We don't expect you to park a semi truck on a wood floor, but you could!



JOISTS ON EDGE

Our floor joists are installed on edge, multiplying strength and stability. Treated joists and skids are standard on all models, and SmartFloor is treated with SmartGuard.

SMARTFLOOR. PROVEN STRENGTH.

SmartFloor is engineered for strength, with no natural splits along the grain. A single layer of SmartFloor in a 10'x20' shed has a huge 40,000 -pound live load rating, about five times what most housing codes require. For parking a vehicle, we recommend doubling a SmartFloor.

Engineered wood stays stronger longer, resistant to moisture, termites and fungus. Weight is not the best guide to floor strength. Consider – to a termite, a heavy plank floor is just a bigger meal. The validated strength data of engineered wood is far more reliable.



CROSSWISE PORCH JOISTS

In our porch sheds, joists are run properly – crosswise under the building and out under the porch. Lengthwise allows a porch to settle or even separate. Siding goes down to the joists, so rain or melting snow is blocked from the interior.

HOW IT'S BUILT

Almost three decades of building sheds, garages, playhouses, cabins and custom homes has led us to innovative materials and methods, the use of renewable resources, and a quality of construction once only dreamt of.

RENEWABLE RESOURCES. Engineered wood – our siding, floor deck and trim – comes from small, fast-growing trees harvested from SFI-Certified forests. We plant hundreds of trees a year to ensure the future of this precious renewable resource.

PURE DESIGN. Our designs have been refined over time to complement every housing style with modern architectural sensitivity.

QUALITY MATERIALS. We begin with bright lumber – cleaner and straighter skids, studs and trusses than in many houses. Engineered wall panels have the many advantages of textured surfaces, structural integrity, and resistance to mold, mildew and insects.

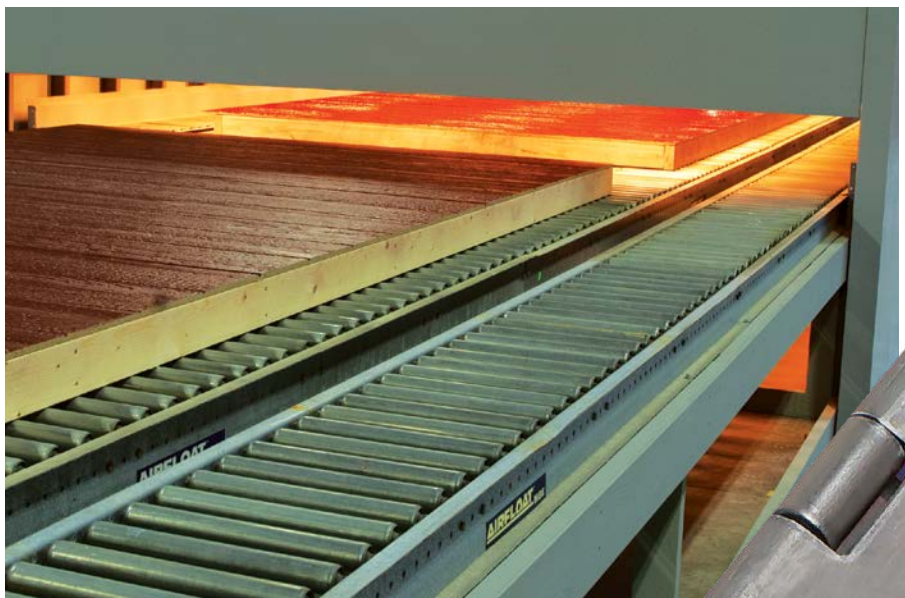
PANELIZATION. Panelizing creates stronger, straighter, tighter walls. It protects raw wood from exposure to weather. Even large structures can be built with surprising speed and minimal disruption to a job site. Panelizing produces a better-quality structure with more efficiency and less waste.

BAKED-ON FINISHES. Paints and stains cure best with seven days of hot, dry weather. Our paint oven replaces nature with a controlled exposure to heat and UV rays, replicating a hot sun and improving the adhesion of the finish.

OSB ROOF SHEATHING. OSB has higher moisture tolerance than plywood, more dimensional stability and none of plywood's soft spots. The idea that plywood is better than OSB is a myth.



Modern building technology like panelization results in structures 100% better than those built, say, thirty years ago. Don't settle for less.



Before our paint oven, the best finish took seven days of hot, dry weather. Now the process is fast, thorough and dependable. It's a big improvement, one to demand when you buy.

WHEN IS 1 STRONGER THAN 2 OR 3?

When 1 six-foot hinge replaces 2 or 3 traditional hinges. Our exclusive six-foot, no-rust aluminum piano hinge gives you serious security. Anyone who thinks he will "just take the hinges off" is in for a surprise. A long hinge helps a door swing smoothly and keep it up over time. Why think so much about a hinge? Because it's a weak point on many sheds. Not ours.



BUILT BETTER WITH SUSTAINABLE SIDING

100%

SUSTAINABLY SOURCED FIBER

99%

OF FIBER HARVESTED IS USED IN
PRODUCTS OR AS AN ALTERNATIVE
THERMAL ENERGY SOURCE

79%

OF THERMAL ENERGY USED IN
PRODUCT MANUFACTURING IS
FROM RENEWABLE SOURCES

SKYLINE, 16'x20'. Special touches: 8/12 roof pitch, SmartSide in Driftwood, trim and accents in Nature stain and Weathered Wood shingles. Pent roof, 66" and 30" Craftsman Braced doors, 30" x36" aluminum windows, flower boxes, Z-style shutters, medium coppertop cupola with copper finial and gable-end shakes.

Compliance to Sustainable Forestry Initiative® (SFI®) and PEFC Standards through annual independent 3rd party evaluation. This study involved all LP® SmartSide® production facilities in North America that produce primed panel, lap, and trim. Results are inclusive of all forestry operations, raw material transport, LP SmartSide production, transportation to the customer, and end of life.





	New England	Signature Series	KidzSpace/Raised Henrietta
SmartSide® Doors	2"x3" frame, adjustable steel brace, keyed door latch	2"x3" frame, adjustable steel brace, keyed door latch	2"x3" frame, adjustable steel brace, keyed door latch
Single Door	33"x72": 6'W barns	33"x72": Brookside & Gardener	26"x63" & 20"x40": Clubhouse, Victorian 33"x72" & 20"x40": Castle 26"x51" & 12"x20": Raised Henrietta
Double Door	54"x72": 8'W & wider barns	54"x72": 8'W & wider barns (except Gardener)	
Piano hinge	Aluminum, 6' continuous	Aluminum, 6' continuous	Aluminum, 6' continuous
Siding	SmartSide® with SilverTech interior or 5" straight vinyl	SmartSide® with SilverTech interior, 6" SmartLap or 5" straight vinyl	SmartSide® with SilverTech interior
Wall framing	2"x4" wall framing, 24" on center	2"x4" wall framing, 16" on center	2"x4" wall framing, 24" on center
Porches		5/4" treated deck with 6"x6" posts	5/4" treated deck with 4"x4" posts
Vents	Two 8"x16" aluminum vents (one for 6' wide barns)	Continuous ridge vent: Gardener, Hampton, Marco & Payson Six 2" round vents: Elliot Two small wood vents: all other models	Continuous ridge vent: KidzSpace Flip-down door: Raised Henrietta
Pressure-treated skids	4"x4" skids: 6'W (2), 8'W (3), 10'W (5), 12'W (5), 14'W (5), 16'W (8), 20'W (10), 24'W (10)	Fairview, Lexington & Scioto: 4"x4" skids: 12'W (5), 14'W (6), 16'W (6), 18'W (6), 20'W (7), 21'W (7), 23'W (8) All other models: 4"x4" skids: 8'W (3), 10'W (5), 12'W (5), 14'W (5), 16'W (6), 20'W (8), 24'W (9)	4"x4" skids: 2
Floor joists	2"x4" treated joists, on edge, 16" on center, with treated rim	2"x4" treated joists, on edge, 16" on center, with treated rim	2"x4" treated joists, on edge, 16" on center, with treated rim
Flooring	3/4" SmartFloor	3/4" SmartFloor	3/4" SmartFloor
Trusses	24" on center	24" on center	24" on center
Fascia	4"	Gardener: 4" All other models: 6"	4"
Shingles Aluminum drip edge on all roof edges	30-year dimensional fiberglass	30-year dimensional fiberglass	30-year dimensional fiberglass
Roof sheathing	7/16" OSB	7/16" OSB	7/16" OSB
Warranty	5-year, top to bottom	20-year, top to bottom	20-years: KidzSpace No warranty: Raised Henrietta

Vinyl sheds, Signature and New England

SmartSide door painted or stained any one color

Continuous ridge vent (no end vents)

Choice of siding hues (corner trim same as siding)

White or Clay for soffit and fascia



ONE-HOUR INSTALLATION!

You'll be amazed! JDM's small, specialized lift trucks (called "mules") and highly trained drivers make short work of deliveries and keep the process clean and fast.

Our equipment fits tight spaces, but where access is truly impossible, have your shed built on site. Watch it happen at jdmstructures.com/installation



SHED BUILDER BY JDM

JDM's new Shed Builder is an amazing 3D experience that's easy, fun and extremely useful. Not only can you design the shed you want, but every detail is instantly priced for you. The Shed Builder puts you in the driver's seat. Take it for a spin, share the results with friends, discuss your design with your local JDM Outdoor Specialist.

Get started today at JDMshedbuilder.com



SHED BUILDER
BY JDM STRUCTURES

3 EASY-PAY OPTIONS

Got questions? Visit jdmstructures.com/easypayoptions for a Quick Comparison chart.



120-MONTH FINANCING, LOWEST MONTHLY PAYMENTS, FAST AND FLEXIBLE

Work with our quality long-term lender for same day approval and the ability to use the cash for any JDM purchase. Build the shed you want at jdmshedbuilder.com and see the low monthly payments instantly.

Apply online through jdmstructures.com/easypayoptions.



RENT-TO-OWN, NO CREDIT CHECK, USE IT NOW, OWN IT SOON

With Rent-to-Own, a factory-built shed can be installed and used while it's being paid for. Choose a three-year or four-year rental program.

Applying couldn't be easier with same day approval and no credit check!

To get started, pay only one month down and a security deposit. Much smarter than renting a commercial storage unit.

See your monthly payments instantly when you build the shed you want at jdmshedbuilder.com. Get the details here or ask your dealer.



12 MONTHS NO INTEREST, USE IT ANYWHERE

Apply online at our quality 12-Month, No-Interest lender for fast approval and the ability to use the cash anywhere. Use JDMshedbuilder.com to build the shed you want.

Apply online and look for a JDM promo code.

Love Your Backyard



Our goal for every JDM customer is to provide everything you need to create a backyard that simplifies your life with professionally crafted products. Create the space that you will love for years to come.

Sheds

Garages

Outdoor Furniture

Pavilions & Pergolas

Modular Homes

Custom Homes

Decks & Fencing

Playsets

SKYLINE
20'x24'

Special touches: 8/12 roof pitch, SmartSide in Driftwood with Nature trim, 94" Crossbuck doors with strap hinges, 28"x29" wood windows, copper pent roof, corbels, extra-large coppertop cupola with copper finial.



JDM STRUCTURES
BARN+S+SHEDS

jdmstructures.com
jdmshedbuilder.com